



Lower Thames Crossing

2.9 Engineering Drawings and Sections

Volume E (South Portal and Tilbury Plan and Profiles)

(Tracked changes version)

APFP Regulation 5(2)(o) and 6(2)

Infrastructure Planning (Applications:
Prescribed Forms and Procedure)
Regulations 2009

Volume 2

DATE: ~~September~~ 2023

Deleted: August

DEADLINE: ~~4~~

Deleted: 3

Planning Inspectorate Scheme Ref: TR010032
Application Document Ref: TR010032/APP/2.9

VERSION: ~~3~~.0

Deleted: 2

Revision history

Version	Date	Submitted at
1.0	31 October 2022	DCO Application
2.0	24 August 2023	Deadline 3
<u>3.0</u>	<u>19 September 2023</u>	<u>Deadline 4</u>

Lower Thames Crossing

List of contents

	Page number
1 Introduction	1
2 Schedule of Plans included in this application document	4

1 Introduction

- 1.1.1 This document is submitted to the Planning Inspectorate on behalf of the Secretary of State in relation to an application made by National Highways (the Applicant) under section 37 of the Planning Act 2008.
- 1.1.2 The application is for the grant of development consent for the A122 Lower Thames Crossing. Should development consent be granted, the draft A122 (Lower Thames Crossing) Development Consent Order (Application Document 3.1) (the draft Order) will be made by the Secretary of State (subject to any modifications considered appropriate).
- 1.1.3 This document comprises part of the suite of application documentation and is included in the application to comply with Regulations 5(2)(o) and 6(2) of the Infrastructure Planning (Applications: Prescribed Forms and Procedure) Regulations 2009 (the 2009 Regulations), which require:
- a. *5(2)(o) any other plans, drawings and sections necessary to describe the proposals for which development consent is sought, showing details of design, external appearance, and the preferred layout of buildings or structures, drainage, surface water management, means of vehicular and pedestrian access, any car parking to be provided, and means of landscaping.*
 - b. *6(2) If the application is for highway related development or for the construction or alteration of a railway, it must be accompanied by section drawings to suitable horizontal and vertical scales, which show, by reference to Ordnance Survey or Chart datum:*
 - c. *the levels of the proposed works, including in particular and where relevant:*
 - i. *ground levels;*
 - ii. *the height of every proposed bridge, viaduct, aqueduct, embankment and elevated guideway;*
 - iii. *the depth of every proposed cutting and tunnel;*
 - iv. *the levels of the bed of any tidal waters or inland waterway in which it is proposed that any works should be situated;*
 - v. *the height of every structure or device (including a cable, but not catenary and related equipment) intended to be erected above, on or below the surface of, or on or beneath the bed of tidal waters or an inland waterway; and*
 - vi. *drainage outfall details for highways;*

- 1.1.4 The purpose of the Engineering Drawings and Sections Plans is to show the key features of the Project for which development consent is sought. The set shows details of the proposed road plan and longitudinal profile including the ground levels, the height of certain structures and embankments, the depth of proposed cuttings and tunnel, and the indicative location and level of drainage outfall features.
- 1.1.6 For each section, the Applicant has provided a key plan of the corresponding geographical area that provides the sheet number and a description of the associated road works to help with its identification within the set. It is important to note that the plans are numbered in each of the aforementioned sections and that the numbering system does not apply to the set as whole.
- 1.1.7 The key plans use a smaller scale than that prescribed in Regulation 5(3) of the 2009 Regulations so that the Project or the section of the Project can be represented in a single sheet plan. The scales in the key plans vary from 1:50000 to 1:5000. The remaining sheets in the set containing the plan and profiles and the cross sections have been prepared at a horizontal scale of 1:2500 and a vertical scale of 1:250.
- 1.1.8 As this document has been informed by and is part of the application documentation it should be read alongside the other application documents. In particular, the plans should be read alongside the Works Plans (Application Document 2.6) and Schedule 1 of the draft Order (Application Document 3.1). Article 6 of the draft Order should also be referred to as it provides the reference points for the application of the upwards and downwards vertical limits of deviation applicable to the elements of the works.
- 1.1.9 Numbered works shown in the Engineering Drawings and Sections Plans are consistent with the information presented in the Works Plans (Application Document 2.6) and Schedule 1 of the draft Order (Application Document 3.1). Further details of the proposed bridges and tunnel structures are provided in the Structures Plans (Application Document 2.13).
- 1.1.10 The information shown on the plans is commensurate with the preliminary design status of the Project. The detailed design will be in accordance with the extent of the defined limits of deviation provided and any approval required under the DCO requirements set out in Schedule 2 of the draft Order (Application Document 3.1).
- 1.1.11 The lateral limits of deviation for the works are shown in the Works Plans (Application Document 2.6) and in the Tunnel Limits of Deviation (Application Document 2.15); article 6 of the draft Order establishes the vertical limits of deviation. Further information about the limits of deviation is provided in the Introduction to the Application (Application Document 1.3).
- 1.1.12 The Engineering Drawings and Sections show the Order Limits. In this plan set, 'the Order Limits' mean the limits of lands to be acquired or used, permanently or temporarily, within which the authorised development may be carried out (see article 2 of the draft Order (Application Document 3.1)).
- 1.1.13 To ensure that the file size of this document does not exceed the 50MB limit prescribed by the Planning Inspectorate, the set has been split into eight volumes:

- a. Volume A contains the A122 Lower Thames Crossing Plan and Profiles;
 - b. Volume B contains the A122 Lower Thames Crossing Cross Sections;
 - c. Volume C contains the A2/M2 Plan and Profiles and A2 Mainline Plan and Profiles;
 - d. Volume D contains the A122 Lower Thames Crossing/A2 Junction Plan and Profiles;
 - e. Volume E contains the South Portal Plan and Profiles and Tilbury Plan and Profiles;
 - f. Volume F contains the A13 Junction Plan and Profile;
 - g. Volume G contains the A122 Lower Thames Crossing/M25 Junction Plan;
and
 - h. Volume H contains the Overhead Diversion Route and Pylon general arrangements.
- 1.1.14 These plans have been updated at Deadline 1 to address minor drafting inaccuracies.
- 1.1.15 These plans have been updated for Deadline 3 to include the minor amendments as advised by the Examining Authority in Rule 9 [\[PD-022\]](#).
- 1.1.16 These plans have been updated for Deadline 4 to include the proposed changes MRC01, MRC02 and MRC03 following the procedural decision made by the Examining Authority [PD-031].

2 Schedule of Plans included in this application document

Document Title	Document Number	Revision
A122 LTC PLAN AND PROFILES REGULATION 5(2)(o) AND 6(2) KEY PLAN	TR010032/APP/2.9	P03
A122 LTC PLAN AND PROFILES REGULATION 5(2)(o) AND 6(2) SHEET 1	TR010032/APP/2.9	P01
A122 LTC PLAN AND PROFILES REGULATION 5(2)(o) AND 6(2) SHEET 2	TR010032/APP/2.9	P01
A122 LTC PLAN AND PROFILES REGULATION 5(2)(o) AND 6(2) SHEET 3	TR010032/APP/2.9	P02
A122 LTC PLAN AND PROFILES REGULATION 5(2)(o) AND 6(2) SHEET 4	TR010032/APP/2.9	P02
A122 LTC PLAN AND PROFILES REGULATION 5(2)(o) AND 6(2) SHEET 5	TR010032/APP/2.9	P01
A122 LTC PLAN AND PROFILES REGULATION 5(2)(o) AND 6(2) SHEET 6	TR010032/APP/2.9	P02
A122 LTC PLAN AND PROFILES REGULATION 5(2)(o) AND 6(2) SHEET 7	TR010032/APP/2.9	P01
A122 LTC PLAN AND PROFILES REGULATION 5(2)(o) AND 6(2) SHEET 8	TR010032/APP/2.9	P01
A122 LTC PLAN AND PROFILES REGULATION 5(2)(o) AND 6(2) SHEET 9	TR010032/APP/2.9	P01
A122 LTC PLAN AND PROFILES REGULATION 5(2)(o) AND 6(2) SHEET 10	TR010032/APP/2.9	P01
A122 LTC PLAN AND PROFILES REGULATION 5(2)(o) AND 6(2) SHEET 11	TR010032/APP/2.9	P01
A122 LTC PLAN AND PROFILES REGULATION 5(2)(o) AND 6(2) SHEET 12	TR010032/APP/2.9	P02

Deleted: P02

Deleted: P01

Document Title	Document Number	Revision
A122 LTC PLAN AND PROFILES REGULATION 5(2)(o) AND 6(2) SHEET 13	TR010032/APP/2.9	P01
A122 LTC PLAN AND PROFILES REGULATION 5(2)(o) AND 6(2) SHEET 14	TR010032/APP/2.9	P01
CROSS SECTIONS REGULATION 5(2)(o) AND 6(2) KEY PLAN	TR010032/APP/2.9	P03
CROSS SECTIONS REGULATION 5(2)(o) AND 6(2) SHEET 1	TR010032/APP/2.9	P01
CROSS SECTIONS REGULATION 5(2)(o) AND 6(2) SHEET 2	TR010032/APP/2.9	P01
CROSS SECTIONS REGULATION 5(2)(o) AND 6(2) SHEET 3	TR010032/APP/2.9	P01
CROSS SECTIONS REGULATION 5(2)(o) AND 6(2) SHEET 4	TR010032/APP/2.9	P01
CROSS SECTIONS REGULATION 5(2)(o) AND 6(2) SHEET 5	TR010032/APP/2.9	P01
CROSS SECTIONS REGULATION 5(2)(o) AND 6(2) SHEET 6	TR010032/APP/2.9	P01
CROSS SECTIONS REGULATION 5(2)(o) AND 6(2) SHEET 7	TR010032/APP/2.9	P01
CROSS SECTIONS REGULATION 5(2)(o) AND 6(2) SHEET 8	TR010032/APP/2.9	P01
CROSS SECTIONS REGULATION 5(2)(o) AND 6(2) SHEET 9	TR010032/APP/2.9	P01
CROSS SECTIONS REGULATION 5(2)(o) AND 6(2) SHEET 10	TR010032/APP/2.9	P01
CROSS SECTIONS REGULATION 5(2)(o) AND 6(2) SHEET 11	TR010032/APP/2.9	P01

Deleted: P02

Document Title	Document Number	Revision
CROSS SECTIONS REGULATION 5(2)(o) AND 6(2) SHEET 12	TR010032/APP/2.9	P01
CROSS SECTIONS REGULATION 5(2)(o) AND 6(2) SHEET 13	TR010032/APP/2.9	P01
CROSS SECTIONS REGULATION 5(2)(o) AND 6(2) SHEET 14	TR010032/APP/2.9	P01
CROSS SECTIONS REGULATION 5(2)(o) AND 6(2) SHEET 15	TR010032/APP/2.9	P01
CROSS SECTIONS REGULATION 5(2)(o) AND 6(2) SHEET 16	TR010032/APP/2.9	P01
CROSS SECTIONS REGULATION 5(2)(o) AND 6(2) SHEET 17	TR010032/APP/2.9	P01
CROSS SECTIONS REGULATION 5(2)(o) AND 6(2) SHEET 18	TR010032/APP/2.9	P01
A2/M2 PLAN AND PROFILES REGULATION 5(2)(o) AND 6(2) KEY PLAN	TR010032/APP/2.9	P01
A2/M2 PLAN AND PROFILES REGULATION 5(2)(o) AND 6(2) SHEET 1	TR010032/APP/2.9	P01
A2/M2 PLAN AND PROFILES REGULATION 5(2)(o) AND 6(2) SHEET 2	TR010032/APP/2.9	P01
A2/M2 PLAN AND PROFILES REGULATION 5(2)(o) AND 6(2) SHEET 3	TR010032/APP/2.9	P01
A2/M2 PLAN AND PROFILES REGULATION 5(2)(o) AND 6(2) SHEET 4	TR010032/APP/2.9	P01
A2/M2 PLAN AND PROFILES REGULATION 5(2)(o) AND 6(2) SHEET 5	TR010032/APP/2.9	P01
A2/M2 PLAN AND PROFILES REGULATION 5(2)(o) AND 6(2) SHEET 6	TR010032/APP/2.9	P01

Document Title	Document Number	Revision
A2 MAINLINE – PLAN AND PROFILES REGULATION 5(2)(o) AND 6(2) KEY PLAN	TR010032/APP/2.9	P01
A2 MAINLINE – PLAN AND PROFILES REGULATION 5(2)(o) AND 6(2) SHEET 1	TR010032/APP/2.9	P01
A2 MAINLINE – PLAN AND PROFILES REGULATION 5(2)(o) AND 6(2) SHEET 2	TR010032/APP/2.9	P01
A2 MAINLINE – PLAN AND PROFILES REGULATION 5(2)(o) AND 6(2) SHEET 3	TR010032/APP/2.9	P01
A2 MAINLINE – PLAN AND PROFILES REGULATION 5(2)(o) AND 6(2) SHEET 4	TR010032/APP/2.9	P01
A122 LTC/A2 JCT – PLAN AND PROFILES REGULATION 5(2)(o) AND 6(2) KEY PLAN	TR010032/APP/2.9	P01
A122 LTC/A2 JCT – PLAN AND PROFILES REGULATION 5(2)(o) AND 6(2) SHEET 1	TR010032/APP/2.9	P01
A122 LTC/A2 JCT – PLAN AND PROFILES REGULATION 5(2)(o) AND 6(2) SHEET 2	TR010032/APP/2.9	P01
A122 LTC/A2 JCT – PLAN AND PROFILES REGULATION 5(2)(o) AND 6(2) SHEET 3	TR010032/APP/2.9	P01
A122 LTC/A2 JCT – PLAN AND PROFILES REGULATION 5(2)(o) AND 6(2) SHEET 4	TR010032/APP/2.9	P01
A122 LTC/A2 JCT – PLAN AND PROFILES REGULATION 5(2)(o) AND 6(2) SHEET 5	TR010032/APP/2.9	P01
A122 LTC/A2 JCT – PLAN AND PROFILES REGULATION 5(2)(o) AND 6(2) SHEET 6	TR010032/APP/2.9	P01
A122 LTC/A2 JCT – PLAN AND PROFILES REGULATION 5(2)(o) AND 6(2) SHEET 7	TR010032/APP/2.9	P01
A122 LTC/A2 JCT – PLAN AND PROFILES REGULATION 5(2)(o) AND 6(2) SHEET 8	TR010032/APP/2.9	P01

Document Title	Document Number	Revision
A122 LTC/A2 JCT – PLAN AND PROFILES REGULATION 5(2)(o) AND 6(2) SHEET 9	TR010032/APP/2.9	P01
A122 LTC/A2 JCT – PLAN AND PROFILES REGULATION 5(2)(o) AND 6(2) SHEET 10	TR010032/APP/2.9	P01
A122 LTC/A2 JCT – PLAN AND PROFILES REGULATION 5(2)(o) AND 6(2) SHEET 11	TR010032/APP/2.9	P01
A122 LTC/A2 JCT – PLAN AND PROFILES REGULATION 5(2)(o) AND 6(2) SHEET 12	TR010032/APP/2.9	P01
A122 LTC/A2 JCT – PLAN AND PROFILES REGULATION 5(2)(o) AND 6(2) SHEET 13	TR010032/APP/2.9	P01
A122 LTC/A2 JCT – PLAN AND PROFILES REGULATION 5(2)(o) AND 6(2) SHEET 14	TR010032/APP/2.9	P01
A122 LTC/A2 JCT – PLAN AND PROFILES REGULATION 5(2)(o) AND 6(2) SHEET 15	TR010032/APP/2.9	P01
A122 LTC/A2 JCT – PLAN AND PROFILES REGULATION 5(2)(o) AND 6(2) SHEET 16	TR010032/APP/2.9	P01
SOUTH PORTAL – PLAN AND PROFILES REGULATION 5(2)(o) AND 6(2) KEY PLAN	TR010032/APP/2.9	P01
SOUTH PORTAL – PLAN AND PROFILES REGULATION 5(2)(o) AND 6(2) SHEET 1	TR010032/APP/2.9	P01
SOUTH PORTAL – PLAN AND PROFILES REGULATION 5(2)(o) AND 6(2) SHEET 2	TR010032/APP/2.9	P01
TILBURY – PLAN AND PROFILES REGULATION 5(2)(o) AND 6(2) KEY PLAN	TR010032/APP/2.9	P03
TILBURY – PLAN AND PROFILES REGULATION 5(2)(o) AND 6(2) SHEET 1	TR010032/APP/2.9	P01
TILBURY – PLAN AND PROFILES REGULATION 5(2)(o) AND 6(2) SHEET 2	TR010032/APP/2.9	P02

Deleted: P02

Deleted: P01

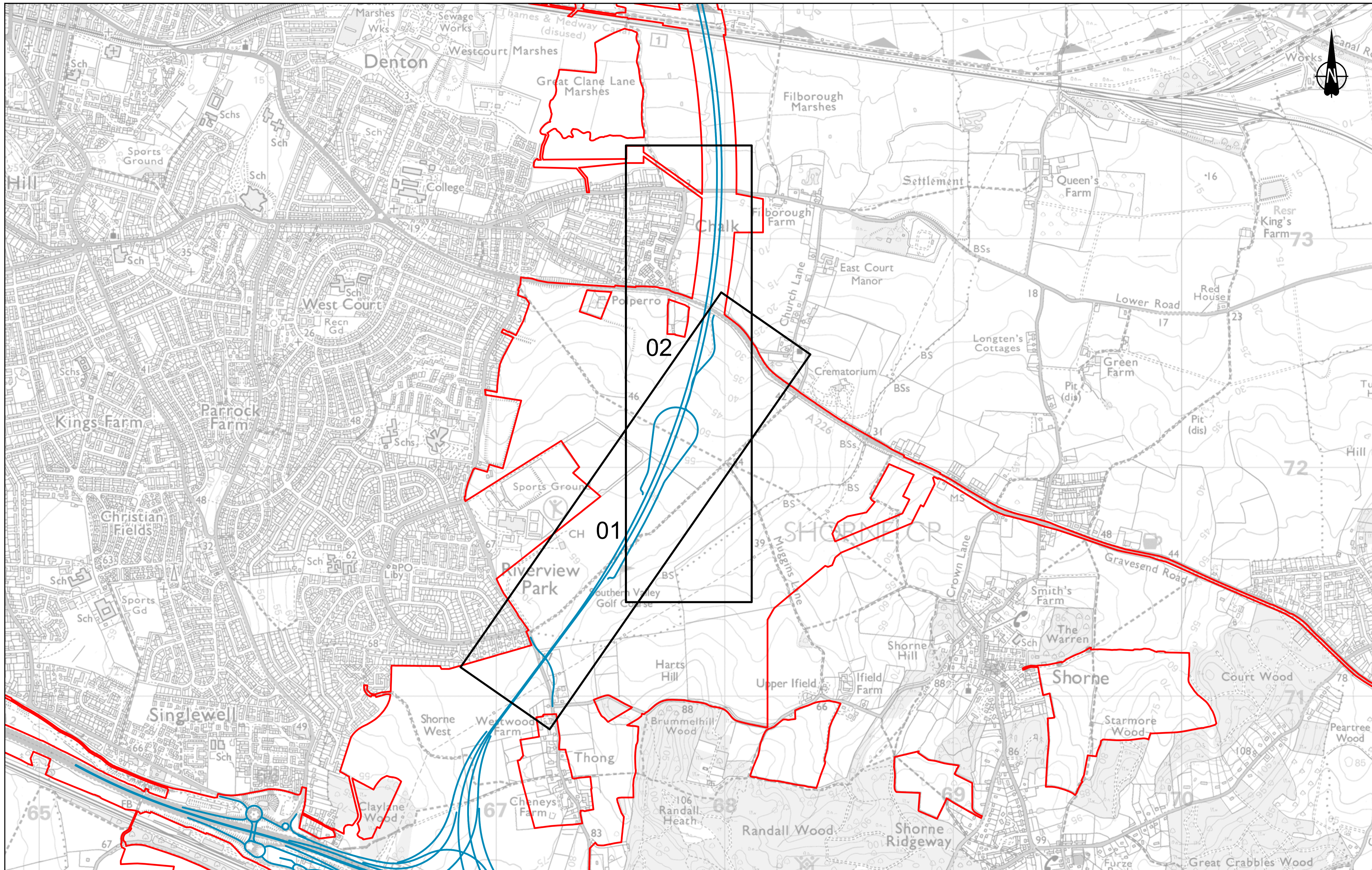
Document Title	Document Number	Revision
TILBURY – PLAN AND PROFILES REGULATION 5(2)(o) AND 6(2) SHEET 3	TR010032/APP/2.9	P01
TILBURY – PLAN AND PROFILES REGULATION 5(2)(o) AND 6(2) SHEET 4	TR010032/APP/2.9	P02
TILBURY – PLAN AND PROFILES REGULATION 5(2)(o) AND 6(2) SHEET 5	TR010032/APP/2.9	P02
TILBURY – PLAN AND PROFILES REGULATION 5(2)(o) AND 6(2) SHEET 6	TR010032/APP/2.9	P02
TILBURY – PLAN AND PROFILES REGULATION 5(2)(o) AND 6(2) SHEET 7	TR010032/APP/2.9	P01
A13 JUNCTION – PLAN AND PROFILES REGULATION 5(2)(o) AND 6(2) KEY PLAN	TR010032/APP/2.9	P01
A13 JUNCTION – PLAN AND PROFILES REGULATION 5(2)(o) AND 6(2) SHEET 1	TR010032/APP/2.9	P01
A13 JUNCTION – PLAN AND PROFILES REGULATION 5(2)(o) AND 6(2) SHEET 2	TR010032/APP/2.9	P01
A13 JUNCTION – PLAN AND PROFILES REGULATION 5(2)(o) AND 6(2) SHEET 3	TR010032/APP/2.9	P01
A13 JUNCTION – PLAN AND PROFILES REGULATION 5(2)(o) AND 6(2) SHEET 4	TR010032/APP/2.9	P01
A13 JUNCTION – PLAN AND PROFILES REGULATION 5(2)(o) AND 6(2) SHEET 5	TR010032/APP/2.9	P01
A13 JUNCTION – PLAN AND PROFILES REGULATION 5(2)(o) AND 6(2) SHEET 6	TR010032/APP/2.9	P01
A13 JUNCTION – PLAN AND PROFILES REGULATION 5(2)(o) AND 6(2) SHEET 7	TR010032/APP/2.9	P01
A13 JUNCTION – PLAN AND PROFILES REGULATION 5(2)(o) AND 6(2) SHEET 8	TR010032/APP/2.9	P02

Document Title	Document Number	Revision
A13 JUNCTION – PLAN AND PROFILES REGULATION 5(2)(o) AND 6(2) SHEET 9	TR010032/APP/2.9	P02
A13 JUNCTION – PLAN AND PROFILES REGULATION 5(2)(o) AND 6(2) SHEET 10	TR010032/APP/2.9	P02
A13 JUNCTION – PLAN AND PROFILES REGULATION 5(2)(o) AND 6(2) SHEET 11	TR010032/APP/2.9	P01
A13 JUNCTION – PLAN AND PROFILES REGULATION 5(2)(o) AND 6(2) SHEET 12	TR010032/APP/2.9	P01
A13 JUNCTION – PLAN AND PROFILES REGULATION 5(2)(o) AND 6(2) SHEET 13	TR010032/APP/2.9	P01
A13 JUNCTION – PLAN AND PROFILES REGULATION 5(2)(o) AND 6(2) SHEET 14	TR010032/APP/2.9	P01
A13 JUNCTION – PLAN AND PROFILES REGULATION 5(2)(o) AND 6(2) SHEET 15	TR010032/APP/2.9	P01
A13 JUNCTION – PLAN AND PROFILES REGULATION 5(2)(o) AND 6(2) SHEET 16	TR010032/APP/2.9	P01
A13 JUNCTION – PLAN AND PROFILES REGULATION 5(2)(o) AND 6(2) SHEET 17	TR010032/APP/2.9	P01
A13 JUNCTION – PLAN AND PROFILES REGULATION 5(2)(o) AND 6(2) SHEET 18	TR010032/APP/2.9	P01
A13 JUNCTION – PLAN AND PROFILES REGULATION 5(2)(o) AND 6(2) SHEET 19	TR010032/APP/2.9	P01
A13 JUNCTION – PLAN AND PROFILES REGULATION 5(2)(o) AND 6(2) SHEET 20	TR010032/APP/2.9	P01
A13 JUNCTION – PLAN AND PROFILES REGULATION 5(2)(o) AND 6(2) SHEET 21	TR010032/APP/2.9	P01
A13 JUNCTION – PLAN AND PROFILES REGULATION 5(2)(o) AND 6(2) SHEET 22	TR010032/APP/2.9	P01

Document Title	Document Number	Revision
A13 JUNCTION – PLAN AND PROFILES REGULATION 5(2)(o) AND 6(2) SHEET 23	TR010032/APP/2.9	P01
A122 LTC/M25 JUNCTION REGULATION 5(2)(o) AND 6(2) KEY PLAN	TR010032/APP/2.9	P01
A122 LTC/M25 JUNCTION REGULATION 5(2)(o) AND 6(2) SHEET 1	TR010032/APP/2.9	P01
A122 LTC/M25 JUNCTION REGULATION 5(2)(o) AND 6(2) SHEET 2	TR010032/APP/2.9	P01
A122 LTC/M25 JUNCTION REGULATION 5(2)(o) AND 6(2) SHEET 3	TR010032/APP/2.9	P01
A122 LTC/M25 JUNCTION REGULATION 5(2)(o) AND 6(2) SHEET 4	TR010032/APP/2.9	P01
A122 LTC/M25 JUNCTION REGULATION 5(2)(o) AND 6(2) SHEET 5	TR010032/APP/2.9	P01
A122 LTC/M25 JUNCTION REGULATION 5(2)(o) AND 6(2) SHEET 6	TR010032/APP/2.9	P01
A122 LTC/M25 JUNCTION REGULATION 5(2)(o) AND 6(2) SHEET 7	TR010032/APP/2.9	P01
A122 LTC/M25 JUNCTION REGULATION 5(2)(o) AND 6(2) SHEET 8	TR010032/APP/2.9	P01
A122 LTC/M25 JUNCTION REGULATION 5(2)(o) AND 6(2) SHEET 9	TR010032/APP/2.9	P01
A122 LTC/M25 JUNCTION REGULATION 5(2)(o) AND 6(2) SHEET 10	TR010032/APP/2.9	P01
A122 LTC/M25 JUNCTION REGULATION 5(2)(o) AND 6(2) SHEET 11	TR010032/APP/2.9	P01
A122 LTC/M25 JUNCTION REGULATION 5(2)(o) AND 6(2) SHEET 12	TR010032/APP/2.9	P01

Document Title	Document Number	Revision
A122 LTC/M25 JUNCTION REGULATION 5(2)(o) AND 6(2) SHEET 13	TR010032/APP/2.9	P01
A122 LTC/M25 JUNCTION REGULATION 5(2)(o) AND 6(2) SHEET 14	TR010032/APP/2.9	P01
A122 LTC/M25 JUNCTION REGULATION 5(2)(o) AND 6(2) SHEET 15	TR010032/APP/2.9	P01
A122 LTC/M25 JUNCTION REGULATION 5(2)(o) AND 6(2) SHEET 16	TR010032/APP/2.9	P01
OVERHEAD DIVERSION ROUTE REGULATION 5(2)(o) AND 6(2) PYLON LAYOUT	TR010032/APP/2.9	P01
OVERHEAD DIVERSION ROUTE REGULATION 5(2)(o) AND 6(2) SHEET 1	TR010032/APP/2.9	P01
OVERHEAD DIVERSION ROUTE REGULATION 5(2)(o) AND 6(2) SHEET 2	TR010032/APP/2.9	P01
OVERHEAD DIVERSION ROUTE REGULATION 5(2)(o) AND 6(2) SHEET 3	TR010032/APP/2.9	P01
OVERHEAD DIVERSION ROUTE REGULATION 5(2)(o) AND 6(2) SHEET 4	TR010032/APP/2.9	P01
OVERHEAD DIVERSION ROUTE REGULATION 5(2)(o) AND 6(2) SHEET 5	TR010032/APP/2.9	P01
OVERHEAD DIVERSION ROUTE REGULATION 5(2)(o) AND 6(2) SHEET 6	TR010032/APP/2.9	P01
PYLON GENERAL ARRANGEMENT REGULATION 5(2)(o) AND 6(2) SHEET 1	TR010032/APP/2.9	P01
PYLON GENERAL ARRANGEMENT REGULATION 5(2)(o) AND 6(2) SHEET 2	TR010032/APP/2.9	P01
PYLON GENERAL ARRANGEMENT REGULATION 5(2)(o) AND 6(2) SHEET 3 - L7c D E12	TR010032/APP/2.9	P01
PYLON GENERAL ARRANGEMENT REGULATION 5(2)(o) AND 6(2)	TR010032/APP/2.9	P01

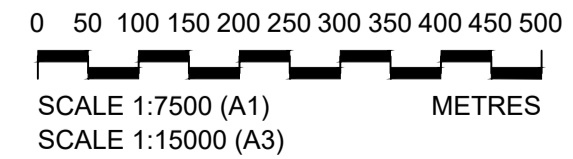
Document Title	Document Number	Revision
SHEET 4 - L7c D30 E12		
PYLON GENERAL ARRANGEMENT REGULATION 5(2)(o) AND 6(2) SHEET 5 - L7c D E3	TR010032/APP/2.9	P01
PYLON GENERAL ARRANGEMENT REGULATION 5(2)(o) AND 6(2) SHEET 6 - L7c D30 E9	TR010032/APP/2.9	P01
PYLON GENERAL ARRANGEMENT REGULATION 5(2)(o) AND 6(2) SHEET 7 - L7c DT E9	TR010032/APP/2.9	P01



Contains Ordnance Survey data. © Crown copyright and database rights 2022. Ordnance Survey 100030649

Rev	Status	Rev. Date	Purpose of revision	Drawn	Check'd	Apprv'd
P01	S8	19/10/2022	DCO Application	LY	BB	ASB

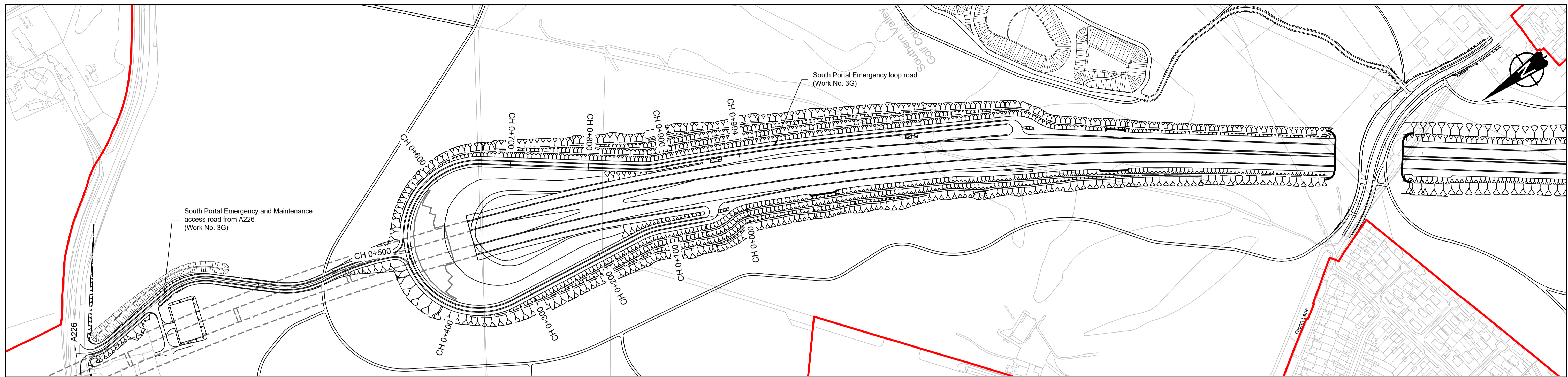
- LEGEND:**
- Proposed Route
 - Order Limits
 - - - Local Authority Boundary



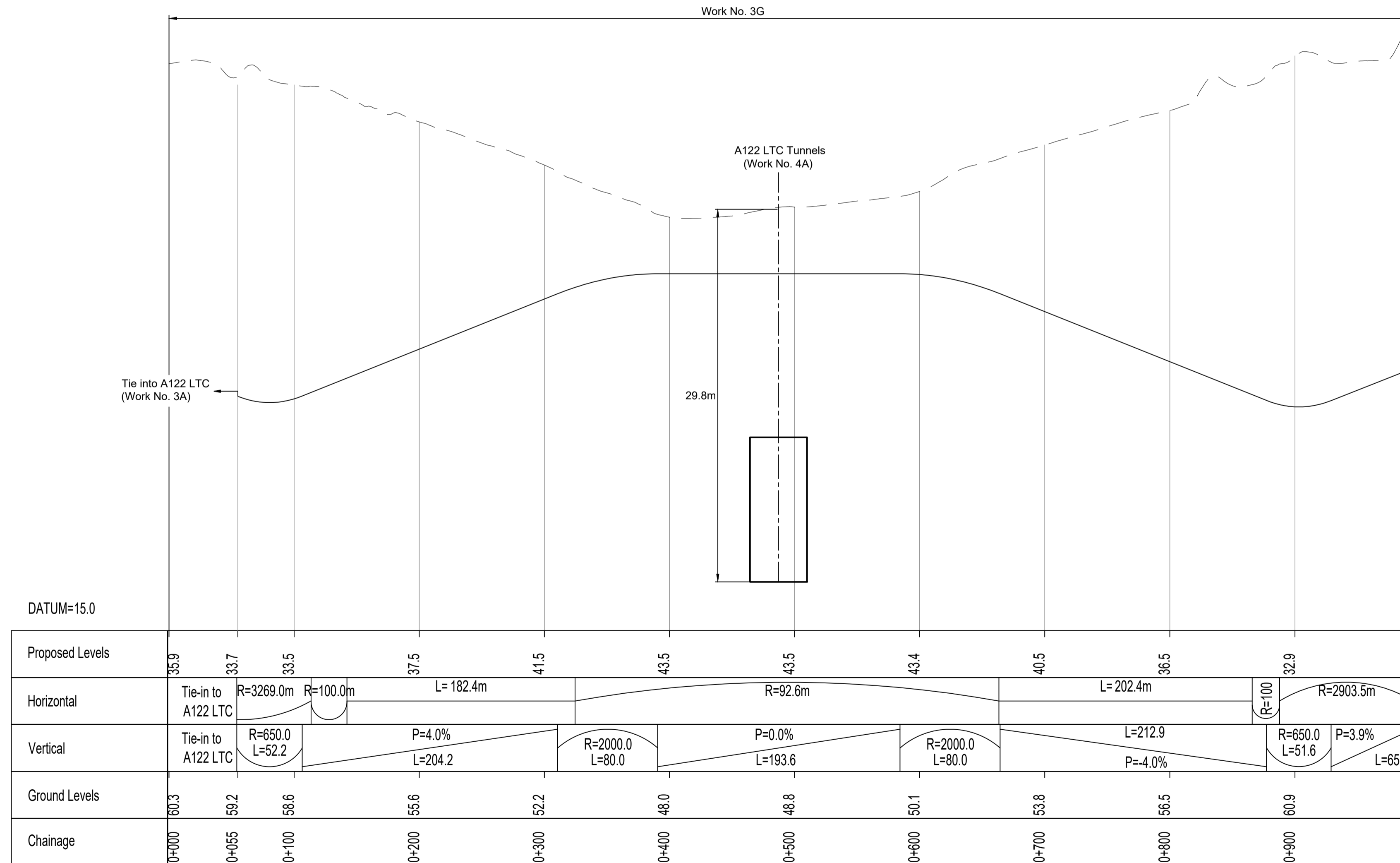
Client 

Project **LOWER THAMES CROSSING**

Status	DCO Application	Original Size	A1	Revision	P01
Application Document Number	TR010032/APP/2.9	Scale	1:5000		
Drawing Title	SOUTH PORTAL - PLAN AND PROFILES REGULATION 5(2)(o) AND 6(2) KEY PLAN				
Drawing Number	HE540039-CJV-BOP-SZA_RX000000_-DR-CH-10300				



PLAN



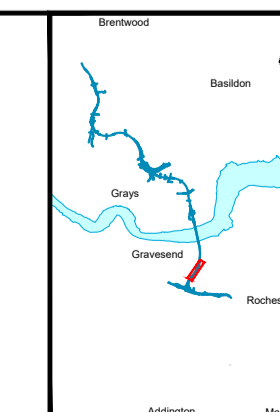
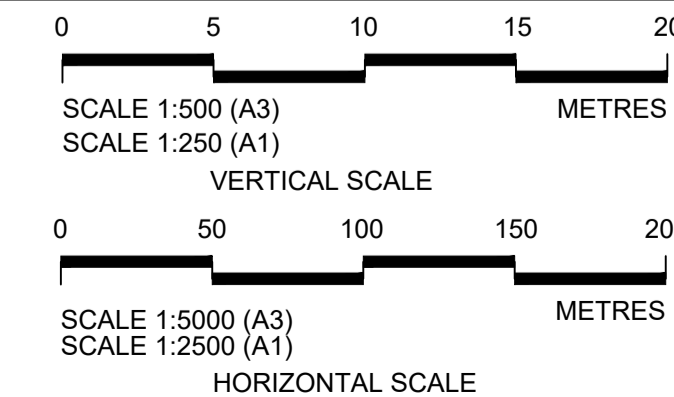
SOUTH PORTAL EMERGENCY LOOP ROAD PROFILE

Contains Ordnance Survey data. © Crown copyright and database rights 2022. Ordnance Survey 100030649

Rev	Status	Rev. Date	Purpose of revision	Drawn	Check'd	Apprv'd
P01	S8	19/10/2022	DCO Application	LY	BB	ASB

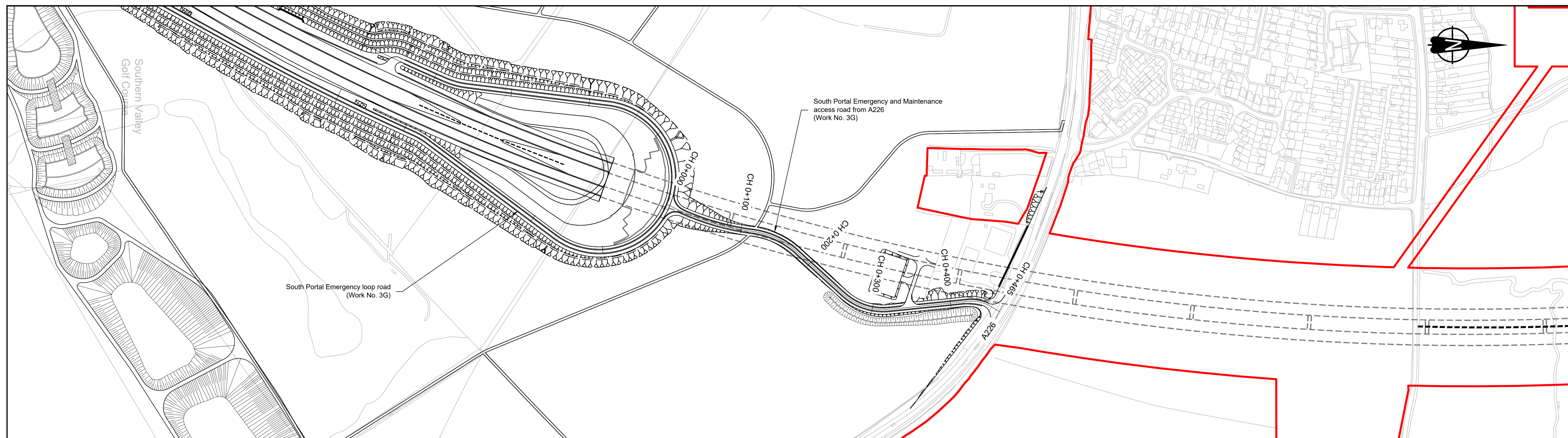
- NOTES:
- The proposed works shown are illustrative only and will be subject to change as part of detailed design development. Any changes will be limited to being within the constraints included in the Development Consent Order (application document reference TR010032/APP/3.1).
 - These plans should be read in conjunction with Schedule 1 (Authorised Development) of the Development Consent Order (application document reference TR010032/APP/3.1).
 - Do not scale from this drawing.
 - All dimensions are in metres unless stated otherwise.
 - All levels are in metres relative to the Ordnance Datum.
 - Profile uses an exaggerated scale of 1 horizontal : 10 Vertical.

- LEGEND:
- Existing ground level
 - == Structure
 - Proposed road level
 - ▭ Structures - Bridge
 - ▭ Structures - Underpass
 - NB - Northbound
 - WB - Westbound
 - EB - Eastbound
 - SB - Southbound
 - MLWS - Mean High Water Springs
 - MLWS - Mean Low Water Springs
 - FRL - Finished Road Level
 - ▨ Maintenance access
 - Order Limits

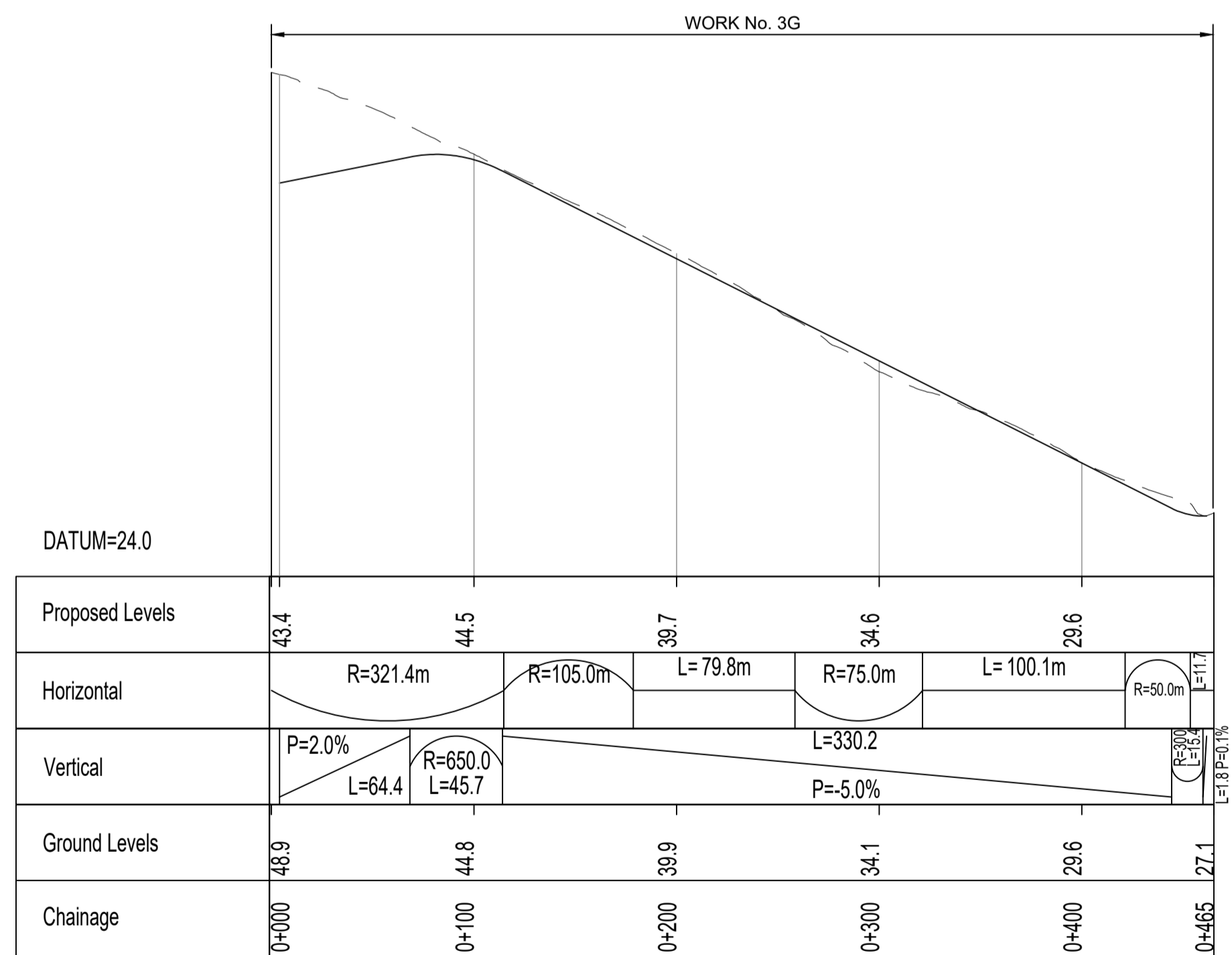


Client
national highways
Project
LOWER THAMES CROSSING

Status	DCO Application	Original Size	Revision
Application Document Number	TR010032/APP/2.9	A1	P01
Drawing title	SOUTH PORTAL - PLAN AND PROFILES REGULATION 5(2)(o) AND 6(2) SHEET 1		
Drawing Number	HE540039-CJV-BOP-SZA_RX000000_-DR-CH-10301		



PLAN

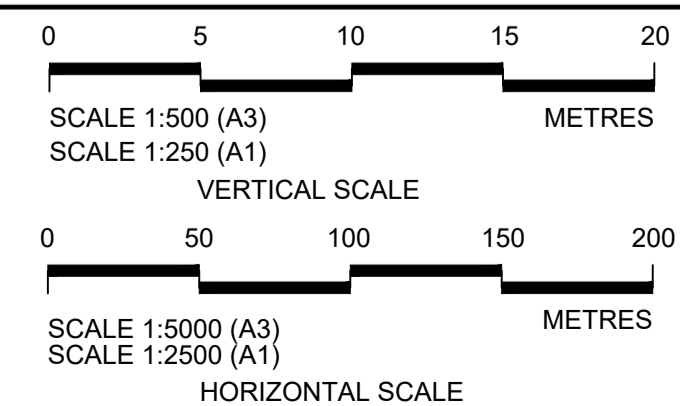


SOUTH PORTAL EMERGENCY AND MAINTENANCE ACCESS ROAD TO A226 PROFILE

Contains Ordnance Survey data. © Crown copyright and database rights 2022. Ordnance Survey 100030649						
P01	S8	19/10/2022	DCO Application	LY	BB	ASB
Rev	Status	Rev. Date	Purpose of revision	Drawn	Check'd	Apprv'd

- NOTES:
- The proposed works shown are illustrative only and will be subject to change as part of detailed design development. Any changes will be limited to being within the constraints included in the Development Consent Order (application document reference TR010032/APP/3.1).
 - These plans should be read in conjunction with Schedule 1 (Authorised Development) of the Development Consent Order (application document reference TR010032/APP/3.1).
 - Do not scale from this drawing.
 - All dimensions are in metres unless stated otherwise.
 - All levels are in metres relative to the Ordnance Datum.
 - Profile uses an exaggerated scale of 1 horizontal : 10 Vertical.

- LEGEND:
- Existing ground level
 - == Structure
 - Proposed road level
 - ▭ Structures - Bridge
 - ▭ Structures - Underpass
 - NB - Northbound
 - WB - Westbound
 - EB - Eastbound
 - SB - Southbound
 - MLWS - Mean Low Water Springs
 - FRL - Finished Road Level
 - ▨ Maintenance access
 - Order Limits

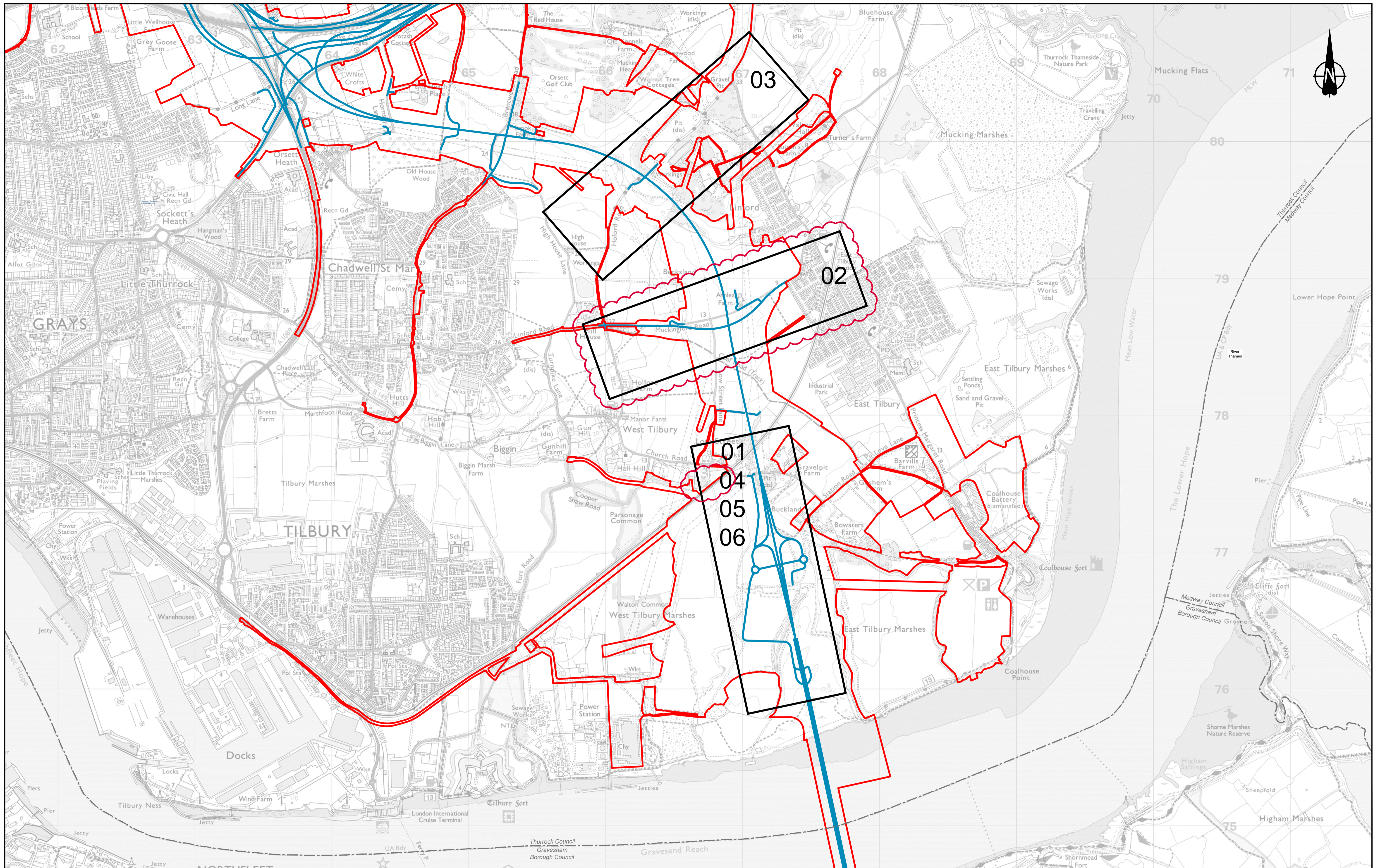


Client

Project

LOWER THAMES CROSSING

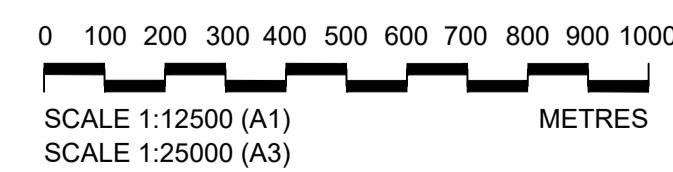
Status	DCO Application	Original Size	A1	Revision	P01
Application Document Number	TR010032/APP/2.9	Scale	AS SHOWN		
Drawing title	SOUTH PORTAL - PLAN AND PROFILES REGULATION 5(2)(o) AND 6(2) SHEET 2				
Drawing Number	HE540039-CJV-BOP-SZA_RX000000_-DR-CH-10302				



Contains Ordnance Survey data. © Crown copyright and database rights 2022. Ordnance Survey 100030649

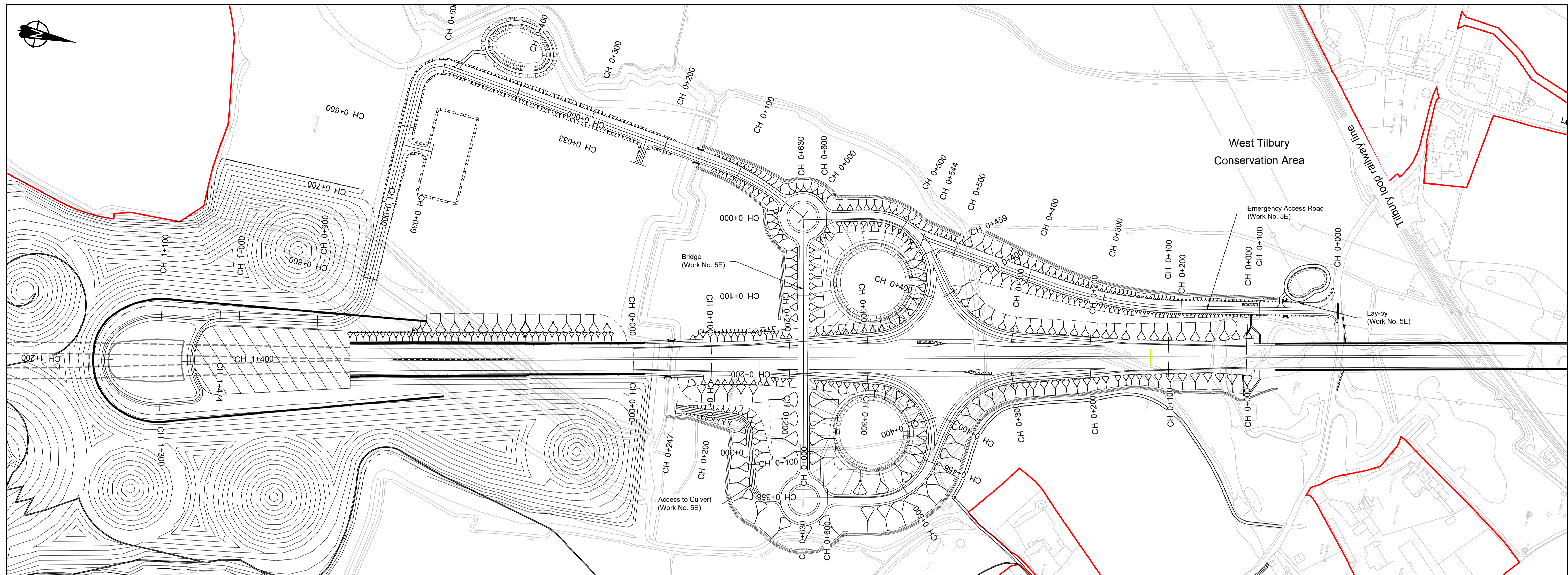
Rev	Status	Rev. Date	Purpose of revision	Drawn	Chkd	Apprvd
P01	S8	19/10/2022	DCO Application	LY	BB	ASB
P02	S8	24/08/2023	Deadline 3	LY	RO	ASB
P03	S8	19/09/2023	Deadline 4	LY	RO	ASB

- LEGEND:**
- Proposed Route
 - Order Limits
 - - - - Local Authority Boundary

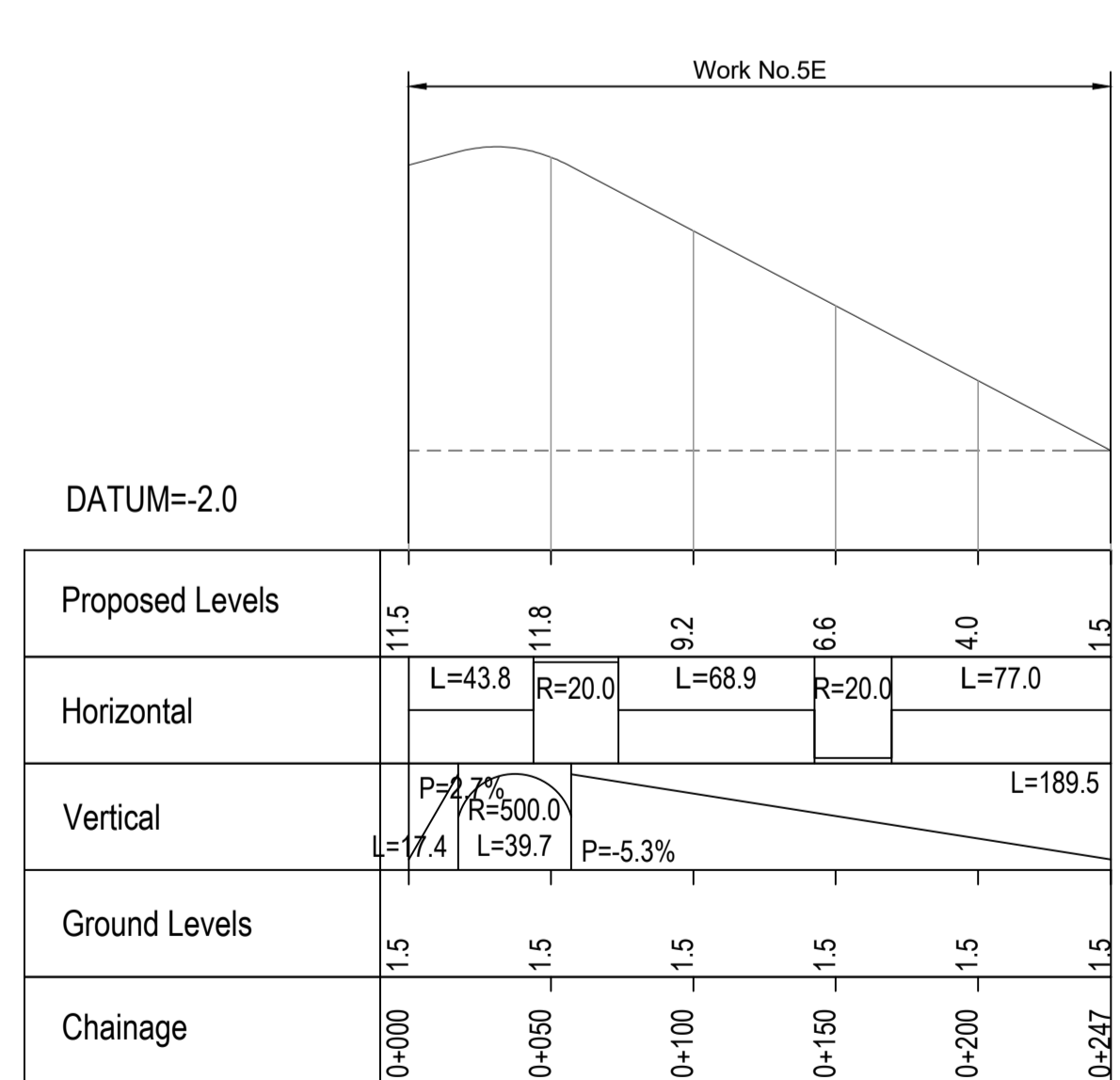


LOWER THAMES CROSSING

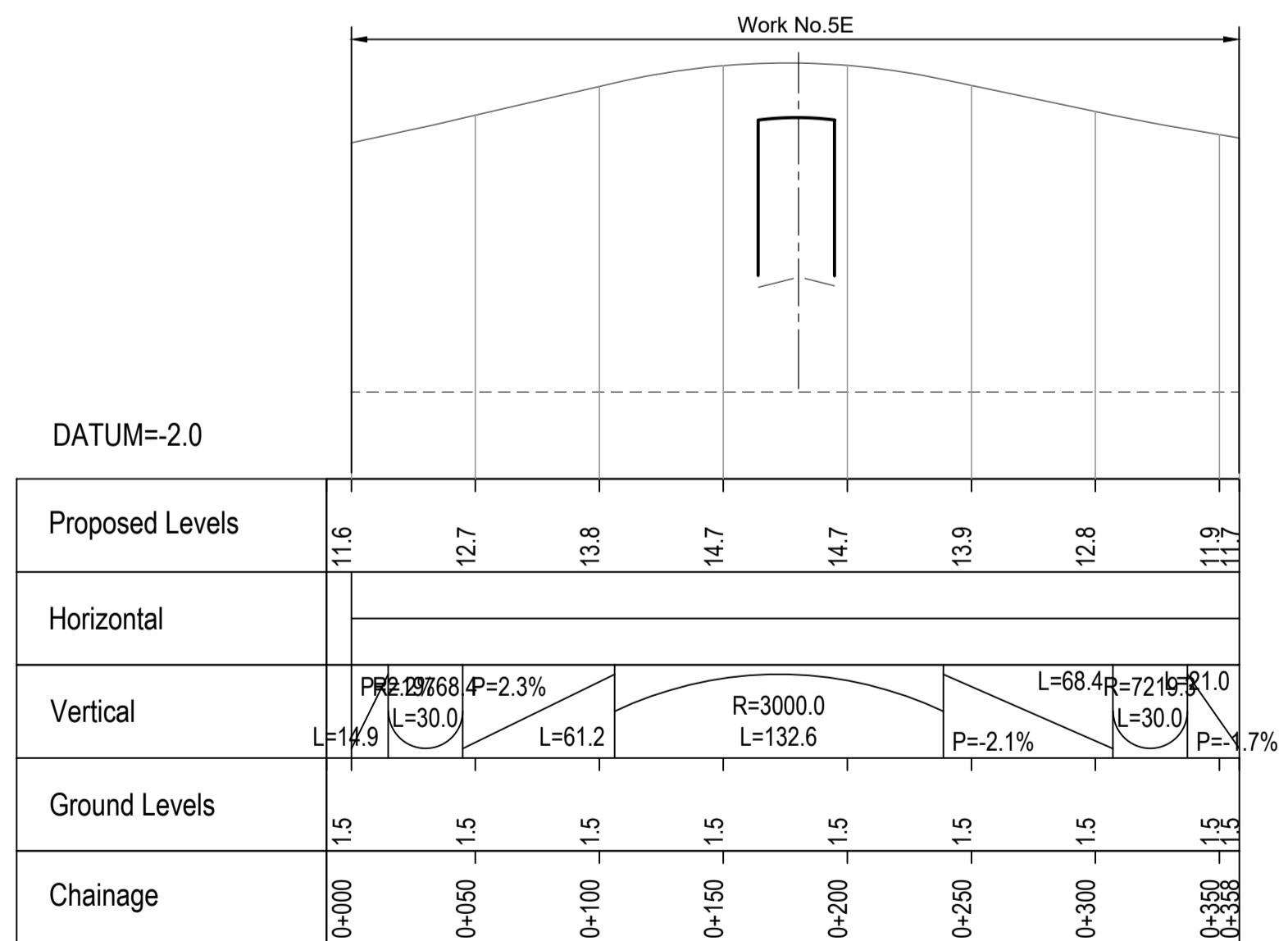
Status	DCO Examination	Original Size	A1	Revision	P03
Application Document Number	TR010032/APP/2.9	Scale	1:10000		
Drawing title	TILBURY - PLAN AND PROFILES REGULATION 5(2)(o) AND 6(2) KEY PLAN				
Drawing Number	HE540039-CJV-BOP-SZA_RX000000_-DR-CH-10400				



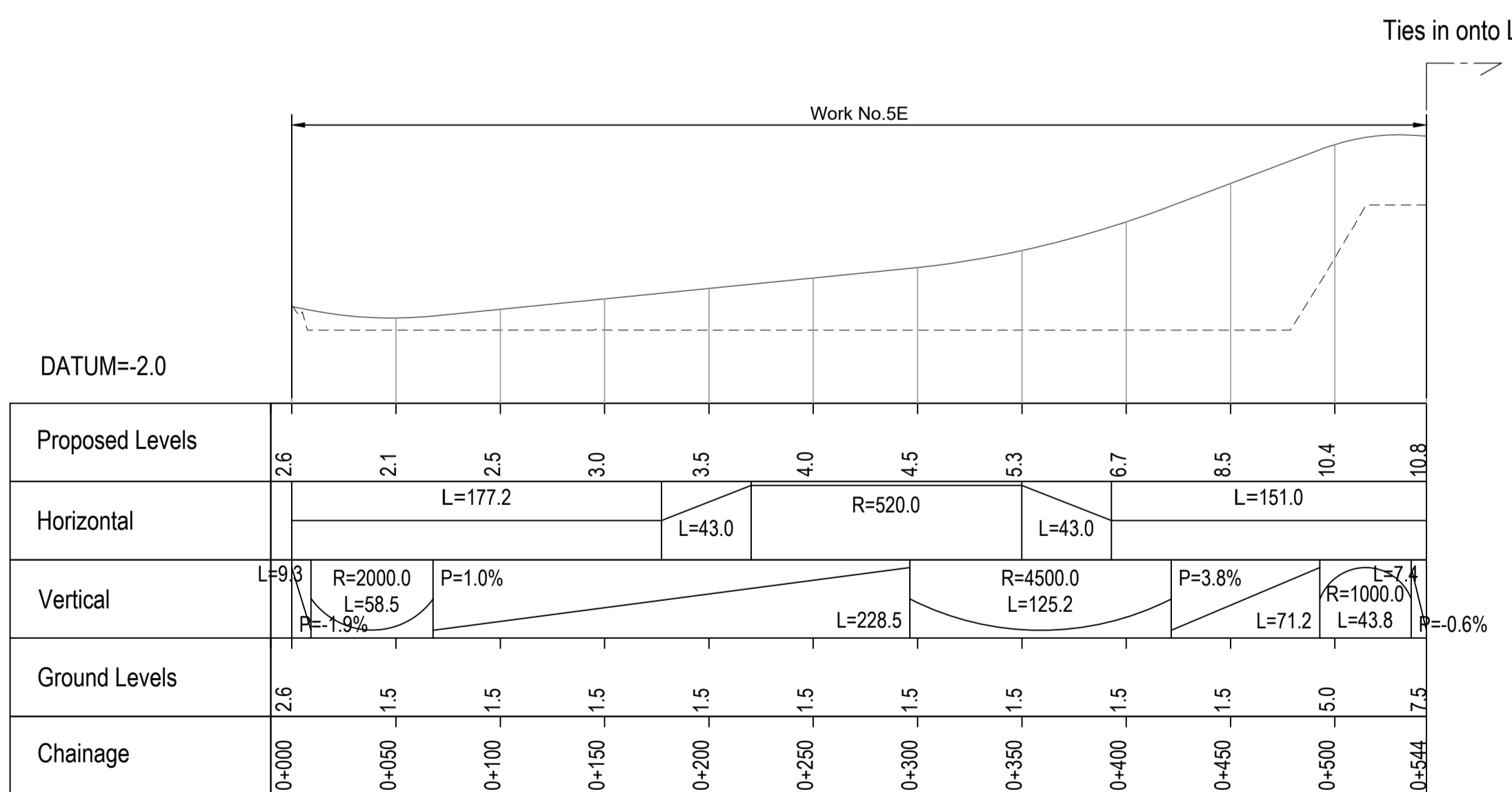
PLAN



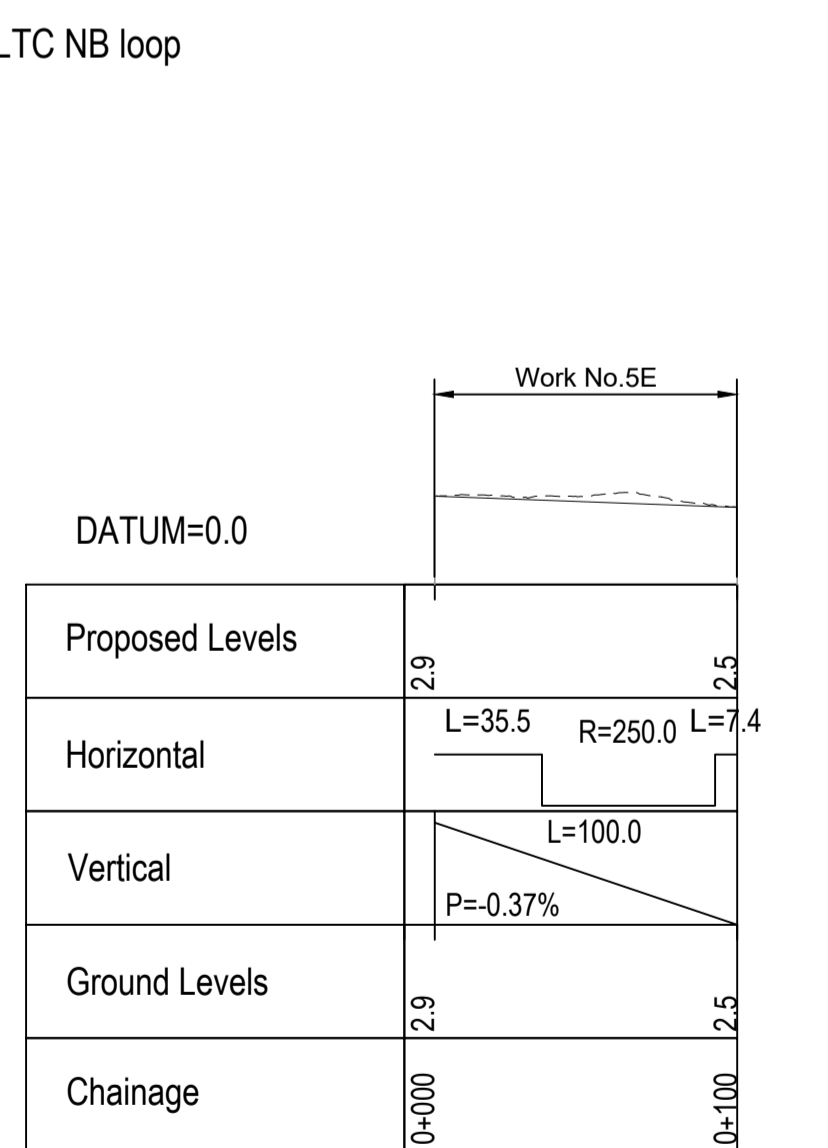
ACCESS TO CULVERT PROFILE



BRIDGE PROFILE



EMERGENCY ACCESS ROAD PROFILE



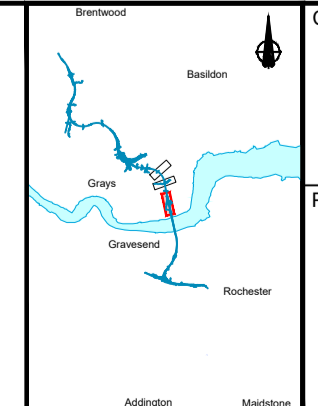
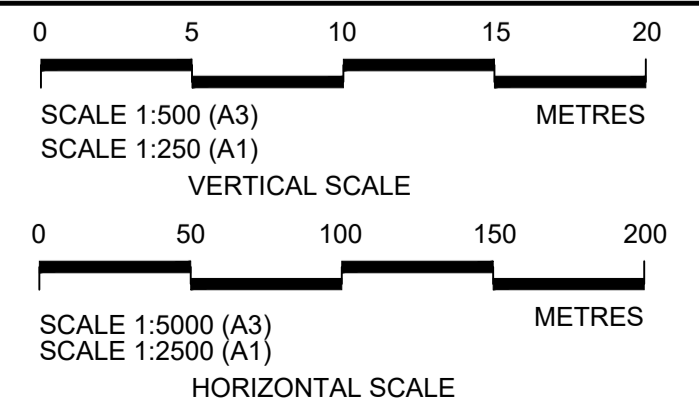
LAY-BY PROFILE

Contains Ordnance Survey data. © Crown copyright and database rights 2022. Ordnance Survey 100030649

P01	S8	19/10/2022	DCO Application	LY	BB	ASB
P02	S8	24/08/2023	Deadline 3	LY	RO	ASB
Rev	Status	Rev. Date	Purpose of revision	Drawn	Check'd	Appr'd

- NOTES:
- The proposed works shown are illustrative only and will be subject to change as part of detailed design development. Any changes will be limited to being within the constraints included in the Development Consent Order (application document reference TR010032/APP/3.1).
 - These plans should be read in conjunction with Schedule 1 (Authorised Development) of the Development Consent Order (application document reference TR010032/APP/3.1).
 - Do not scale from this drawing.
 - All dimensions are in metres unless stated otherwise.
 - All levels are in metres relative to the Ordnance Datum.
 - Profile uses an exaggerated scale of 1 horizontal : 10 Vertical.

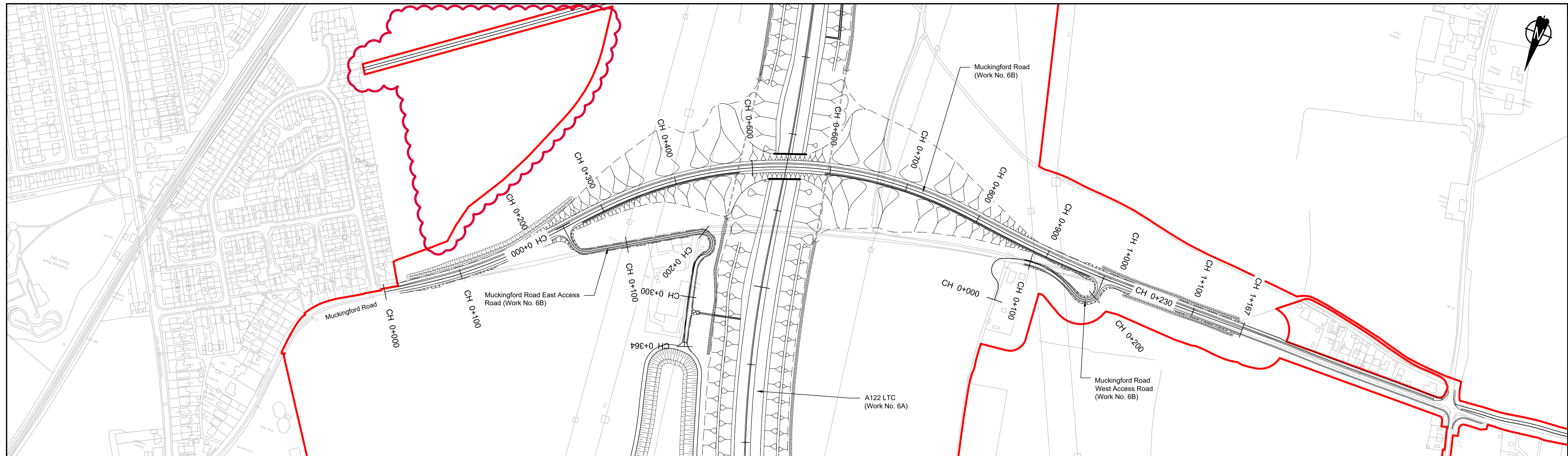
- LEGEND:
- Existing ground level
 - Structure
 - Proposed road level
 - Structures - Bridge
 - Structures - Underpass
 - NB - Northbound
 - WB - Westbound
 - EB - Eastbound
 - SB - Southbound
 - MHWS - Mean High Water Springs
 - MLWS - Mean Low Water Springs
 - FRL - Finished Road Level
 - Maintenance access
 - Order Limits



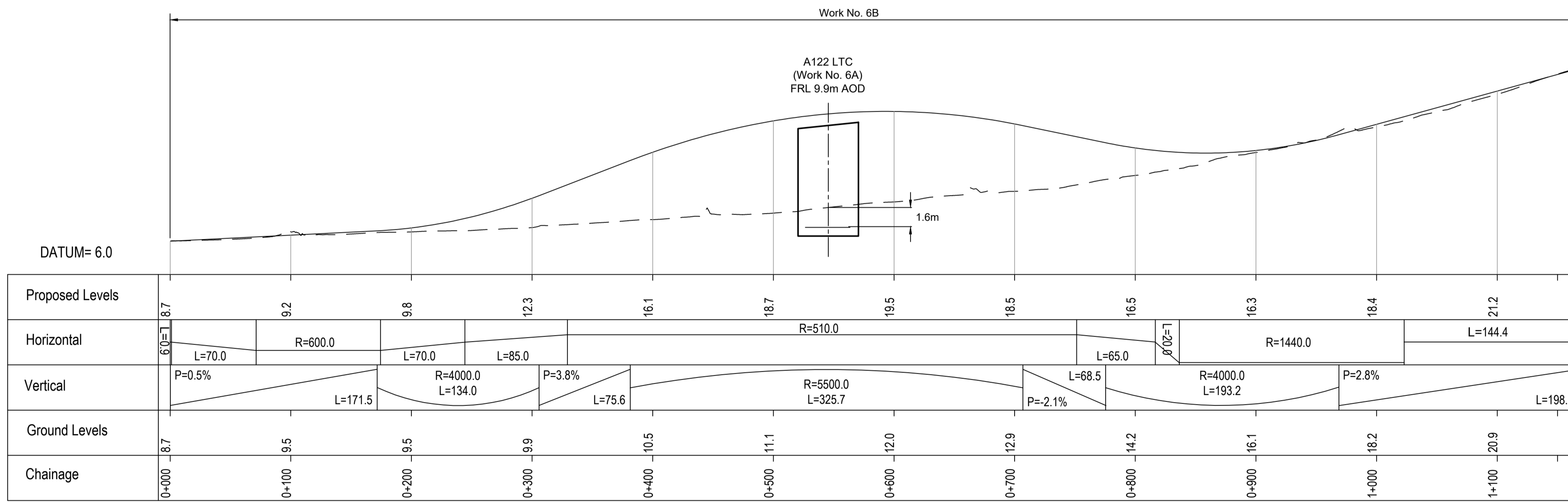
Client: national highways

Project: LOWER THAMES CROSSING

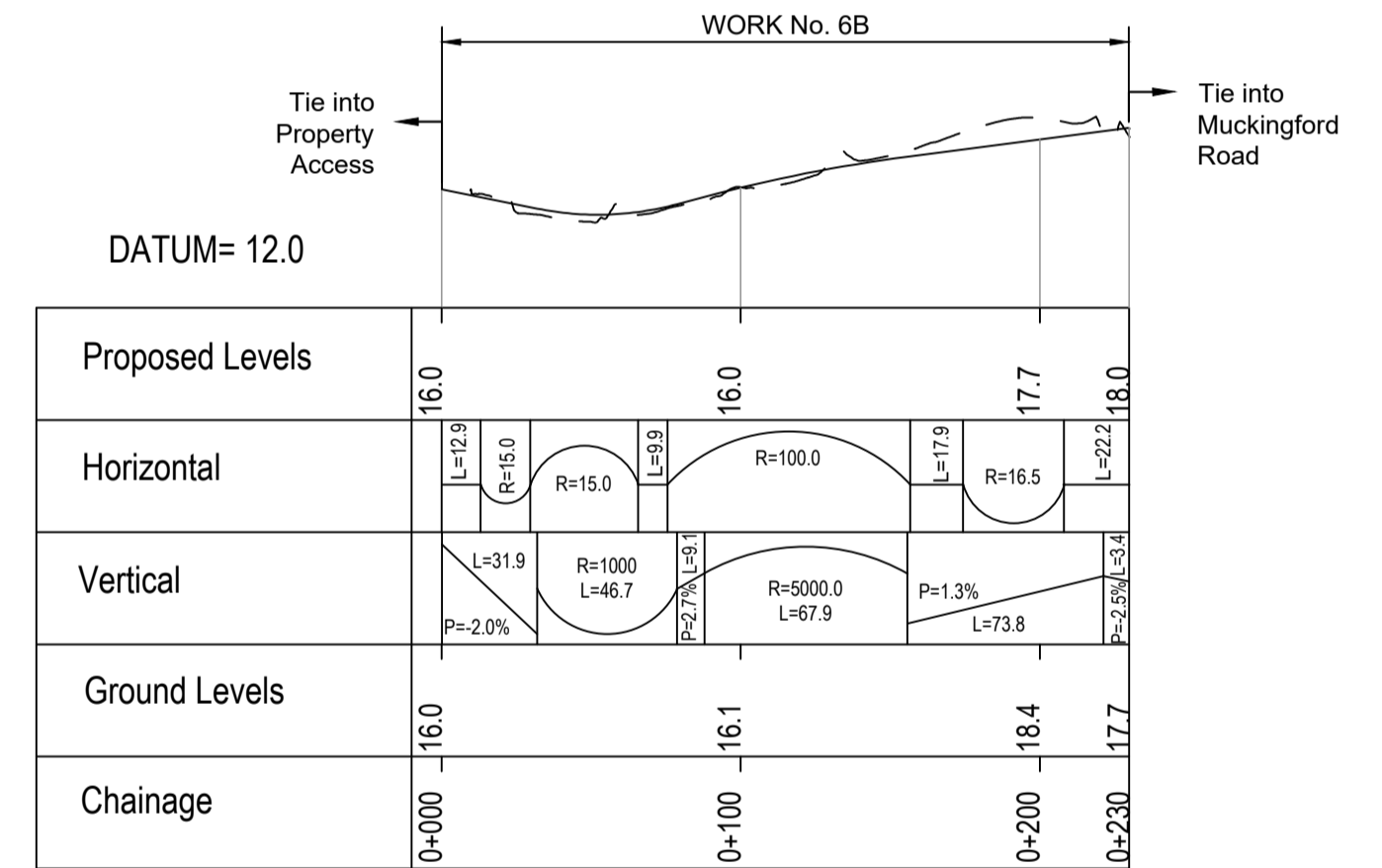
Status	DCO Examination	Original Size	A1	Revision	P02
Application Document Number	TR010032/APP/2.9	Scale	AS SHOWN		
Drawing title	TILBURY - PLAN AND PROFILES REGULATION 5(2)(o) AND 6(2) SHEET 1				
Drawing Number	HE540039-CJV-BOP-SZA_RX000000_-DR-CH-10401				



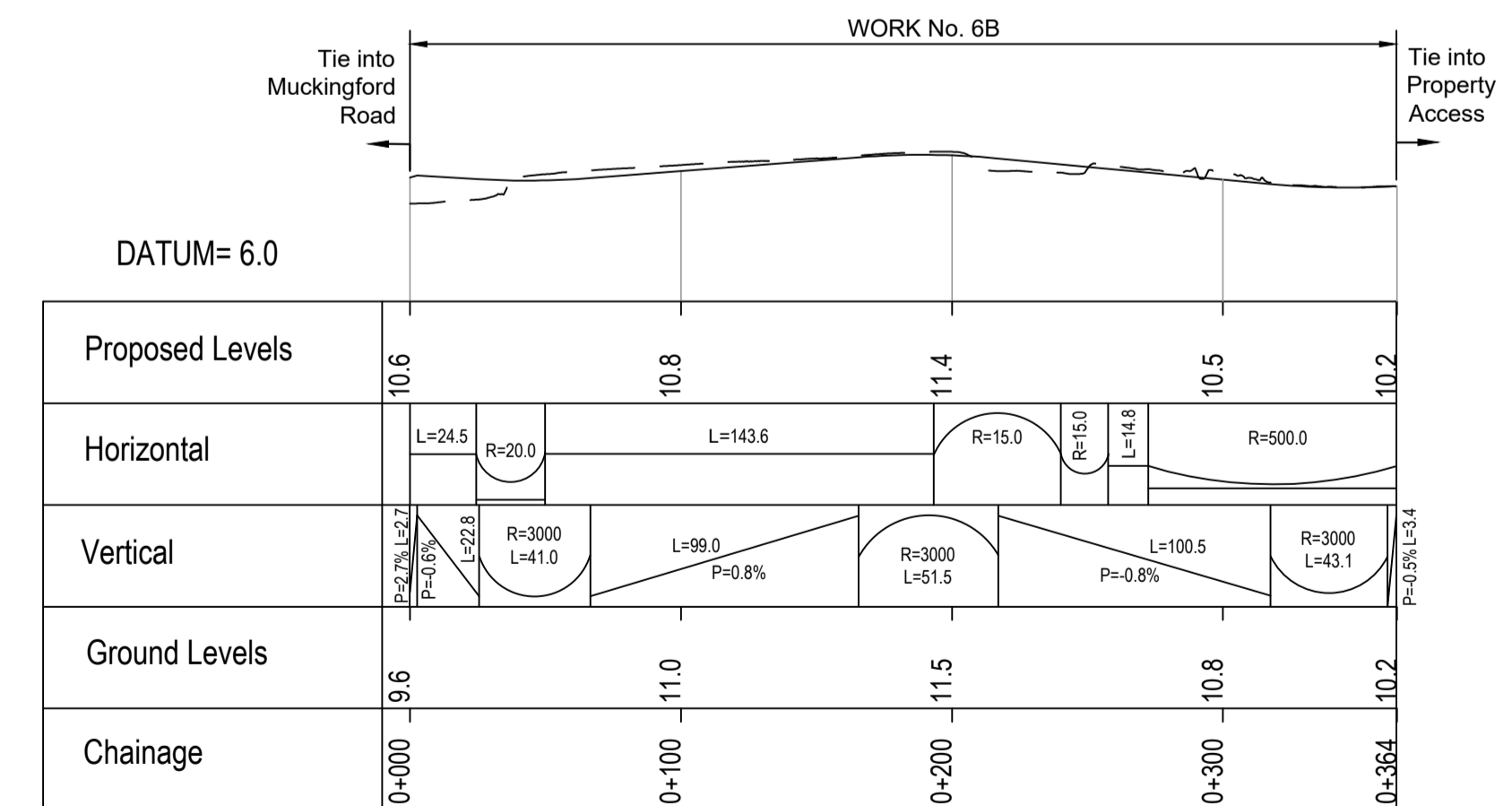
PLAN



MUCKINGFORD ROAD PROFILE



WEST ACCESS ROAD PROFILE

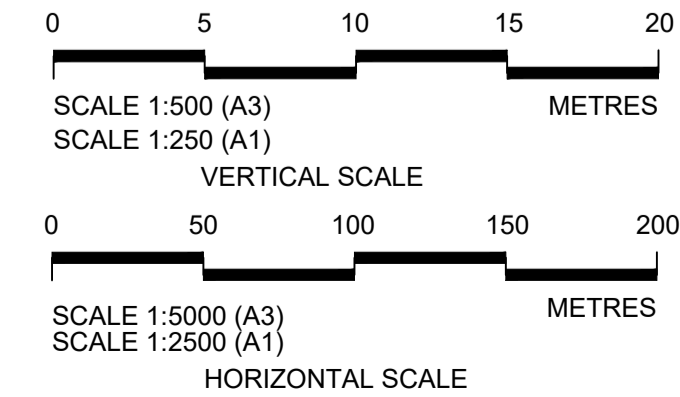


EAST ACCESS ROAD PROFILE

Rev	Status	Rev. Date	Purpose of revision	Drawn	Check'd	Apprv'd
P01	S8	19/10/2022	DCO Application	LY	BB	ASB
P02	S8	19/09/2023	Deadline 4	LY	RO	ASB

- NOTES:
- The proposed works shown are illustrative only and will be subject to change as part of detailed design development. Any changes will be limited to being within the constraints included in the Development Consent Order (application document reference TR010032/APP/3.1).
 - These plans should be read in conjunction with Schedule 1 (Authorised Development) of the Development Consent Order (application document reference TR010032/APP/3.1).
 - Do not scale from this drawing.
 - All dimensions are in metres unless stated otherwise.
 - All levels are in metres relative to the Ordnance Datum.
 - Profile uses an exaggerated scale of 1 horizontal : 10 Vertical.

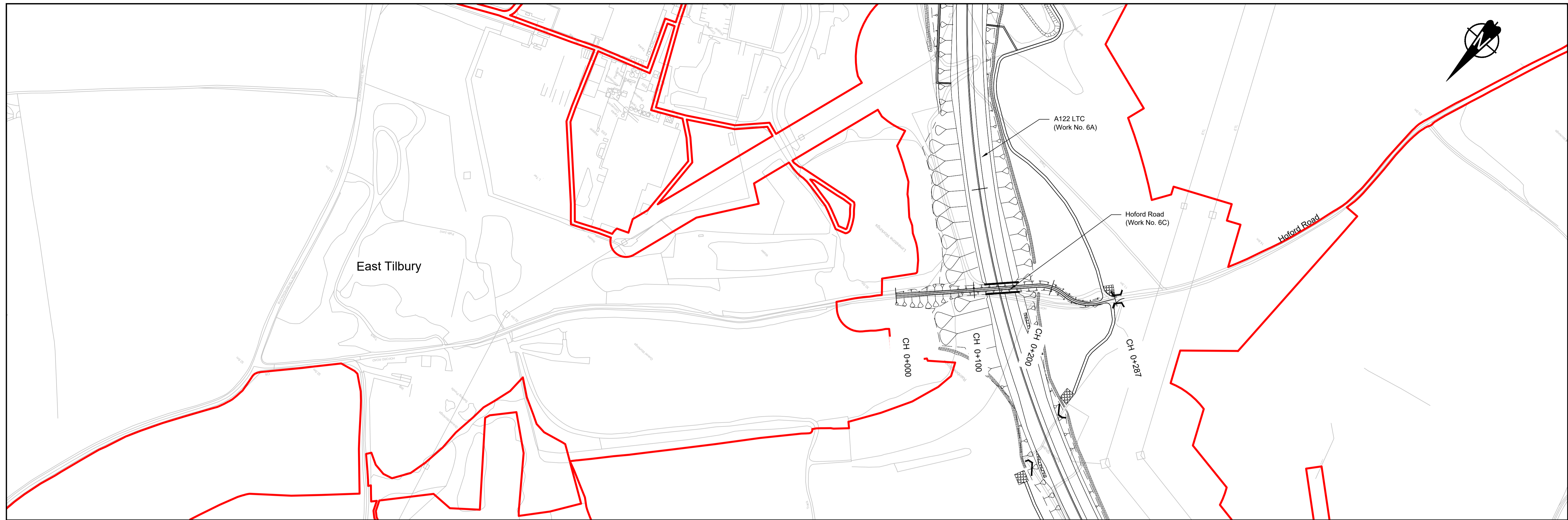
- LEGEND:
- Existing ground level
 - Structure
 - Proposed road level
 - Structures - Bridge
 - Structures - Underpass
 - NB - Northbound
 - WB - Westbound
 - EB - Eastbound
 - SB - Southbound
 - MHWS - Mean High Water Springs
 - MLWS - Mean Low Water Springs
 - FRL - Finished Road Level
 - Maintenance access
 - Order Limits



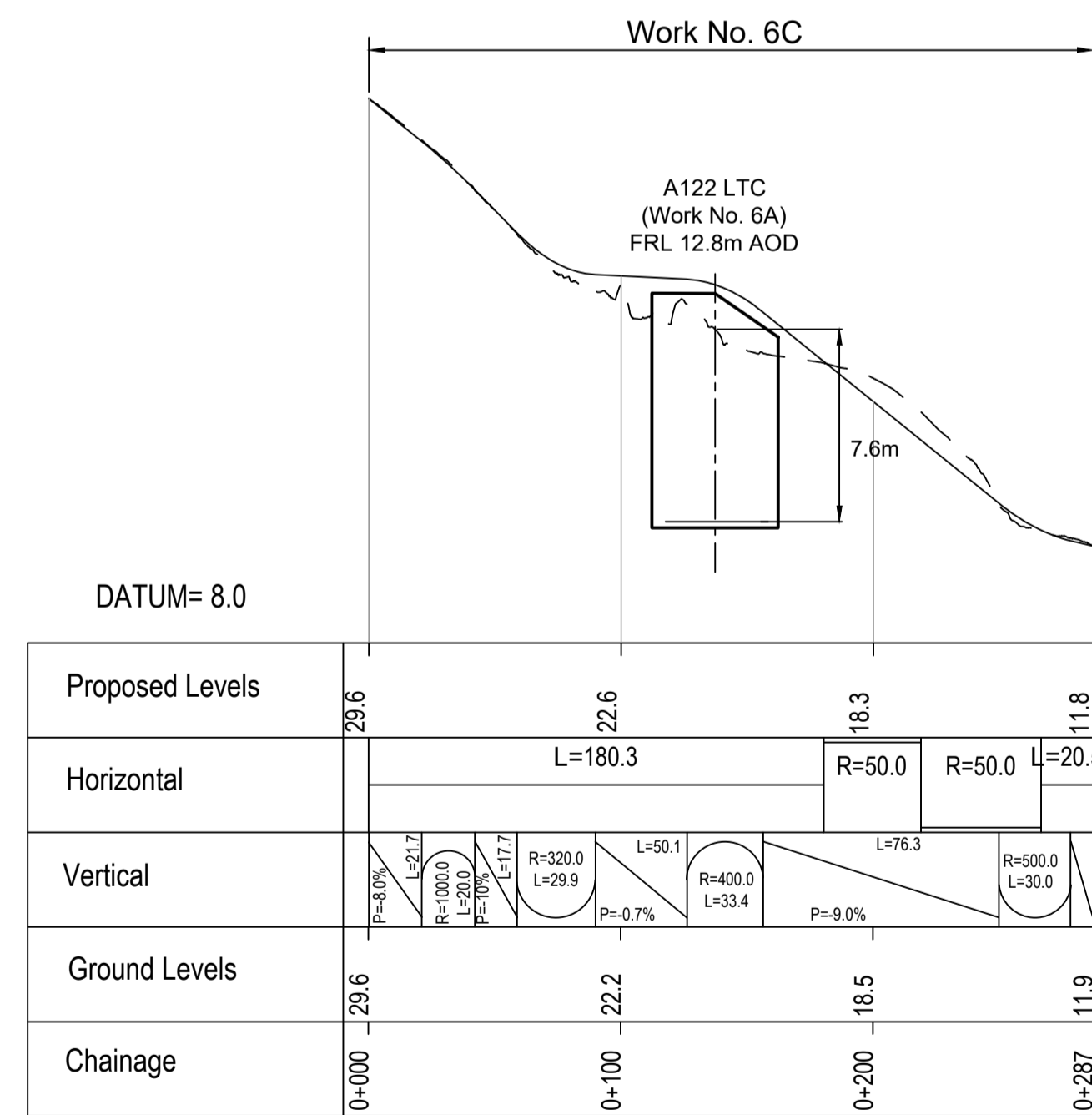
Client: national highways

Project: LOWER THAMES CROSSING

Status	DCO Examination	Original Size	Revision
Application Document Number	TR010032/APP/2.9	A1	P02
Drawing title	TILBURY - PLAN AND PROFILES REGULATION 5(2)(o) AND 6(2) SHEET 2		
Drawing Number	HE540039-CJV-BOP-SZA_RX000000_-DR-CH-10402		



PLAN



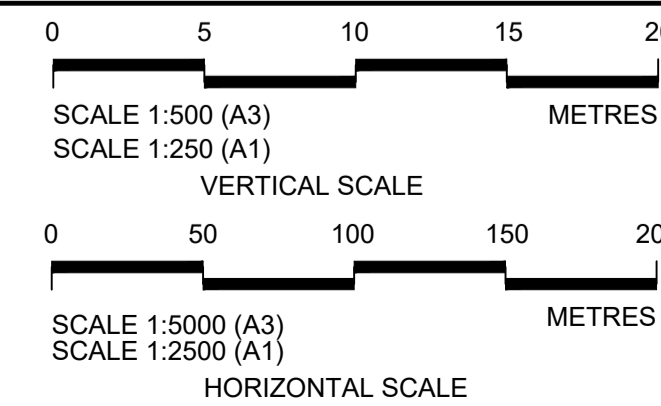
HOFORD ROAD PROFILE

Contains Ordnance Survey data. © Crown copyright and database rights 2022. Ordnance Survey 100035649

P01	SB	19/10/2022	DCO Application	LY	BB	ASB
Rev	Status	Rev. Date	Purpose of revision	Drawn	Check'd	Apprv'd

- NOTES:
- The proposed works shown are illustrative only and will be subject to change as part of detailed design development. Any changes will be limited to being within the constraints included in the Development Consent Order (application document reference TR010032/APP/3.1).
 - These plans should be read in conjunction with Schedule 1 (Authorised Development) of the Development Consent Order (application document reference TR010032/APP/3.1).
 - Do not scale from this drawing.
 - All dimensions are in metres unless stated otherwise.
 - All levels are in metres relative to the Ordnance Datum.
 - Profile uses an exaggerated scale of 1 horizontal : 10 Vertical.

- LEGEND:
- - - Existing ground level
 - Structure
 - Proposed road level
 - Structures - Bridge
 - Structures - Underpass
 - NB - Northbound
 - WB - Westbound
 - EB - Eastbound
 - SB - Southbound
 - MHWS - Mean High Water Springs
 - MLWS - Mean Low Water Springs
 - FRL - Finished Road Level
 - Maintenance access
 - Order Limits

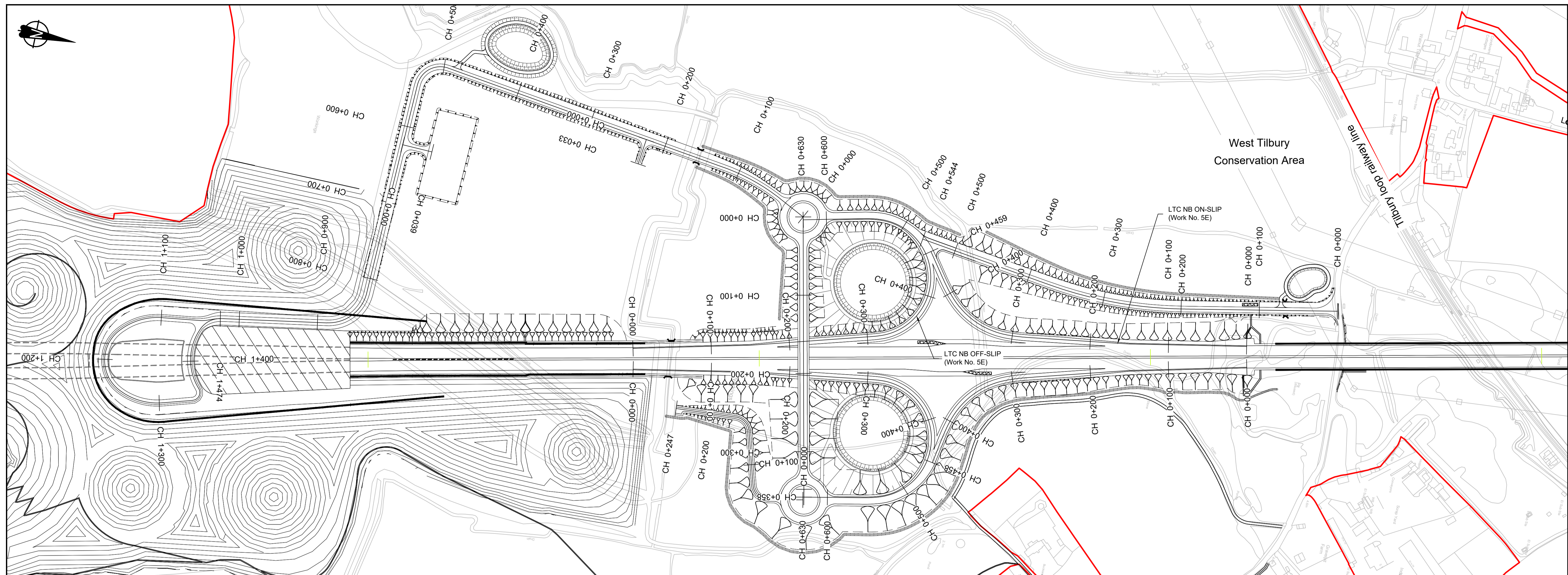


Client

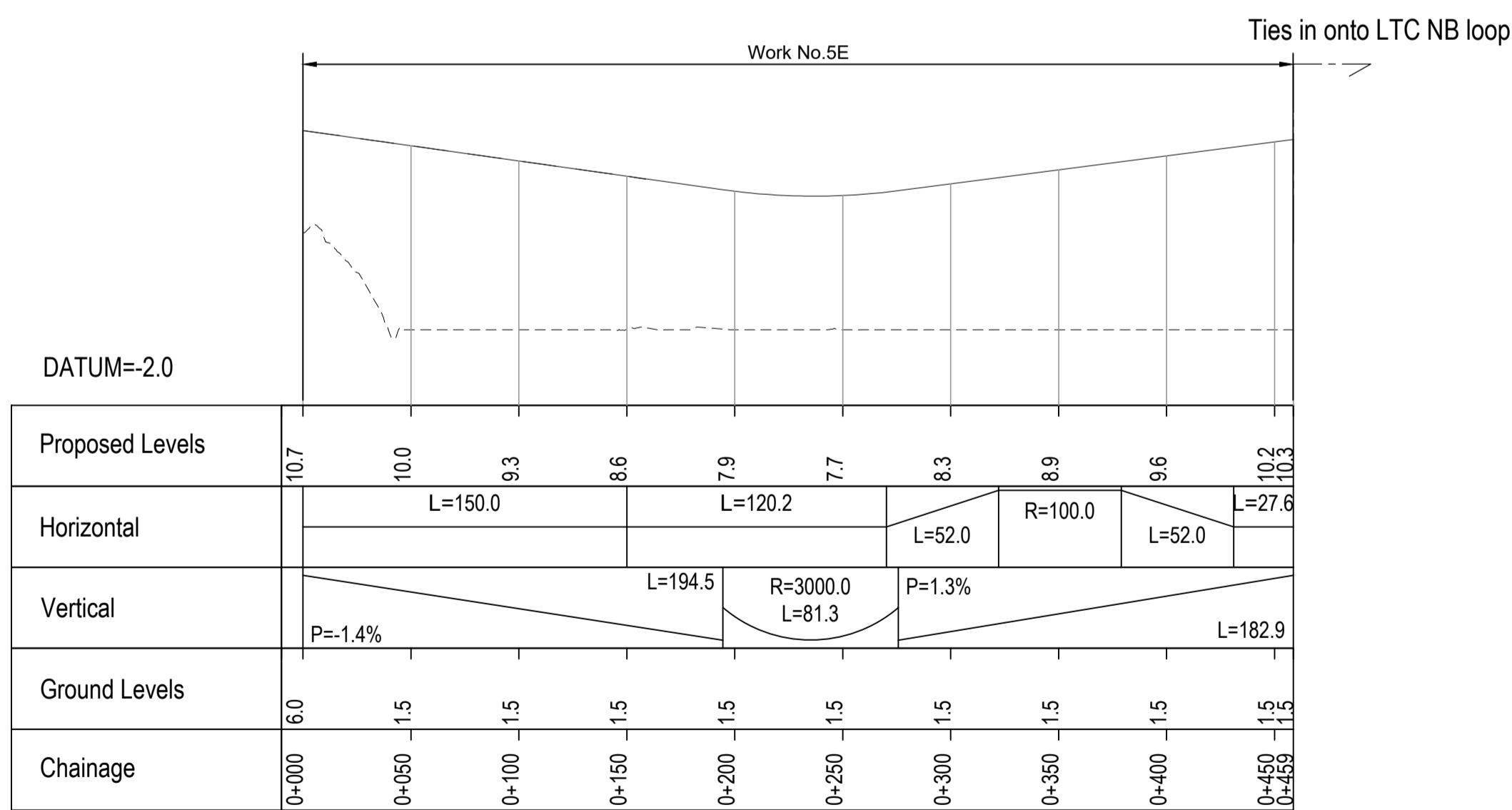
Project

LOWER THAMES CROSSING

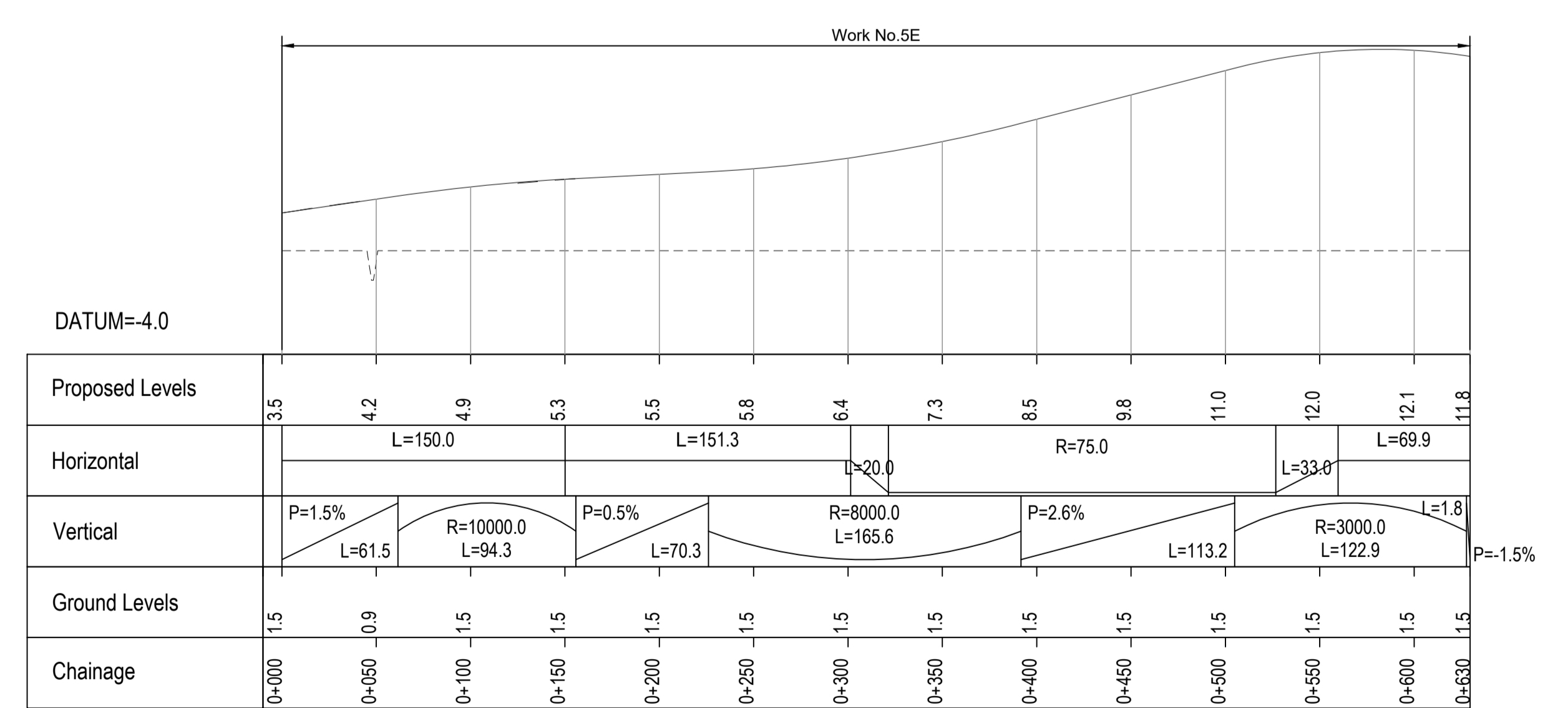
Status	DCO Application	Original Size	Revision
Application Document Number	TR010032/APP/2.9	A1	P01
Drawing title	TILBURY - PLAN AND PROFILES REGULATION 5(2)(o) AND 6(2) SHEET 3		
Drawing Number	HE540039-CJV-BOP-SZA_RX000000_-DR-CH-10403		



PLAN



LTC NB ON-SLIP PROFILE

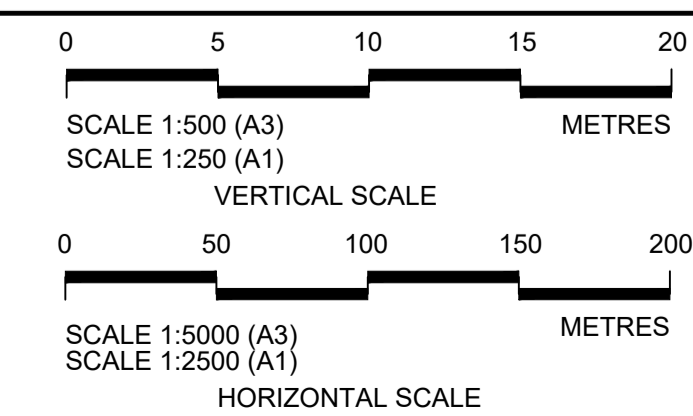


LTC NB OFF-SLIP PROFILE

Rev	Status	Rev. Date	Purpose of revision	Drawn	Check'd	Appr'd
P01	S8	19/10/2022	DCO Application	LY	BB	ASB
P02	S8	24/09/2023	Deadline 3	LY	RO	ASB

- NOTES:
- The proposed works shown are illustrative only and will be subject to change as part of detailed design development. Any changes will be limited to being within the constraints included in the Development Consent Order (application document reference TR010032/APP/3.1).
 - These plans should be read in conjunction with Schedule 1 (Authorised Development) of the Development Consent Order (application document reference TR010032/APP/3.1).
 - Do not scale from this drawing.
 - All dimensions are in metres unless stated otherwise.
 - All levels are in metres relative to the Ordnance Datum.
 - Profile uses an exaggerated scale of 1 horizontal : 10 Vertical.

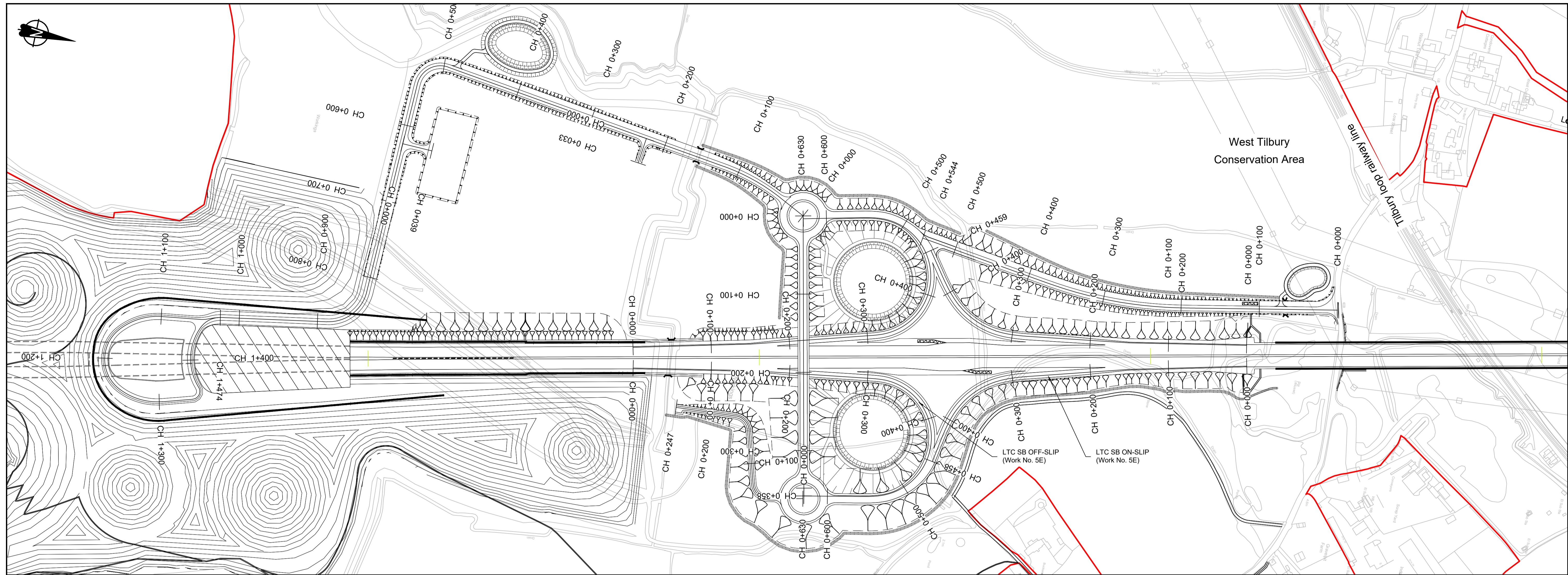
- LEGEND:
- Existing ground level
 - == Structure
 - Proposed road level
 - ▭ Structures - Bridge
 - ▭ Structures - Underpass
 - NB - Northbound
 - WB - Westbound
 - EB - Eastbound
 - SB - Southbound
 - MHWS - Mean High Water Springs
 - MLWS - Mean Low Water Springs
 - FRL - Finished Road Level
 - ▨ Maintenance access
 - Order Limits



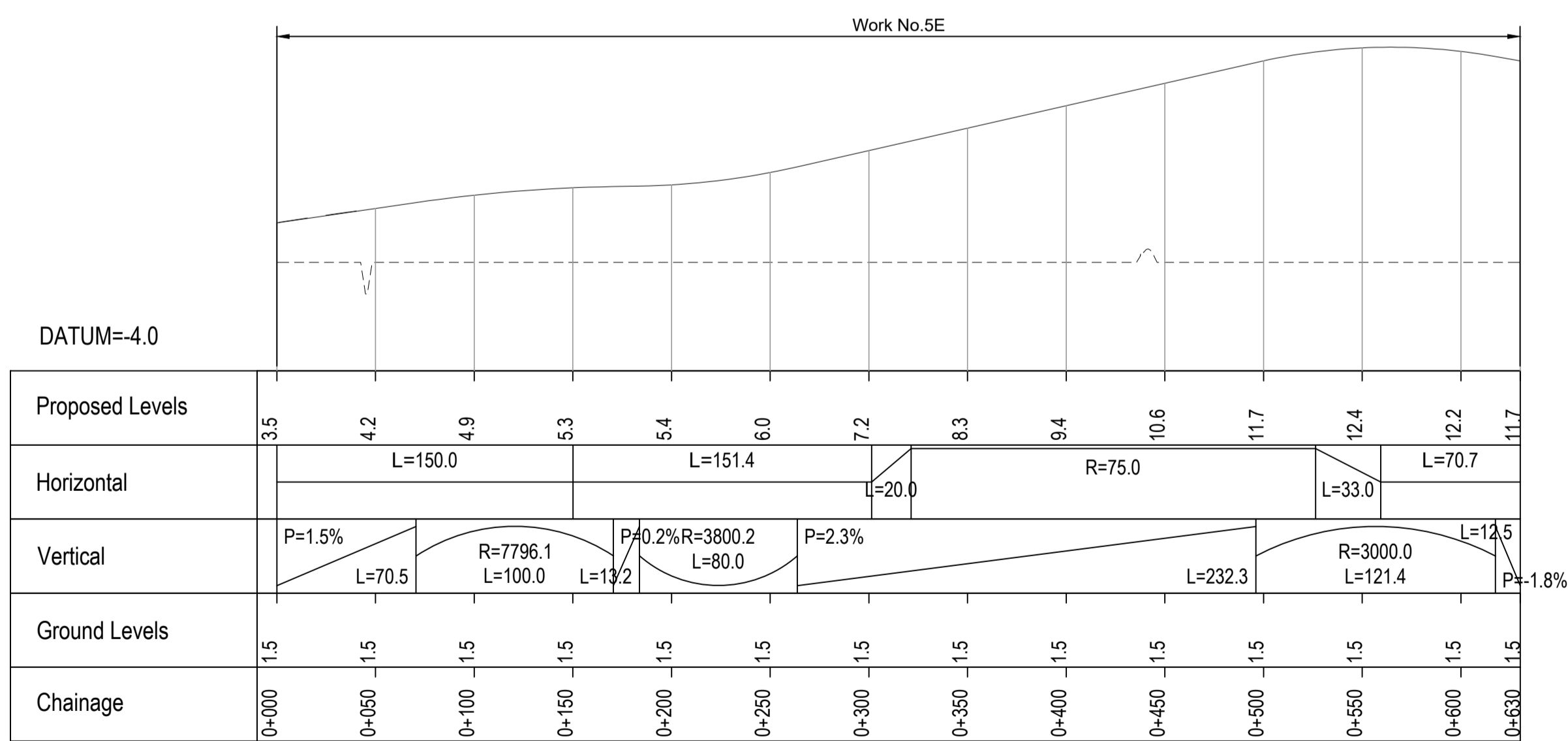
Client: national highways

Project: LOWER THAMES CROSSING

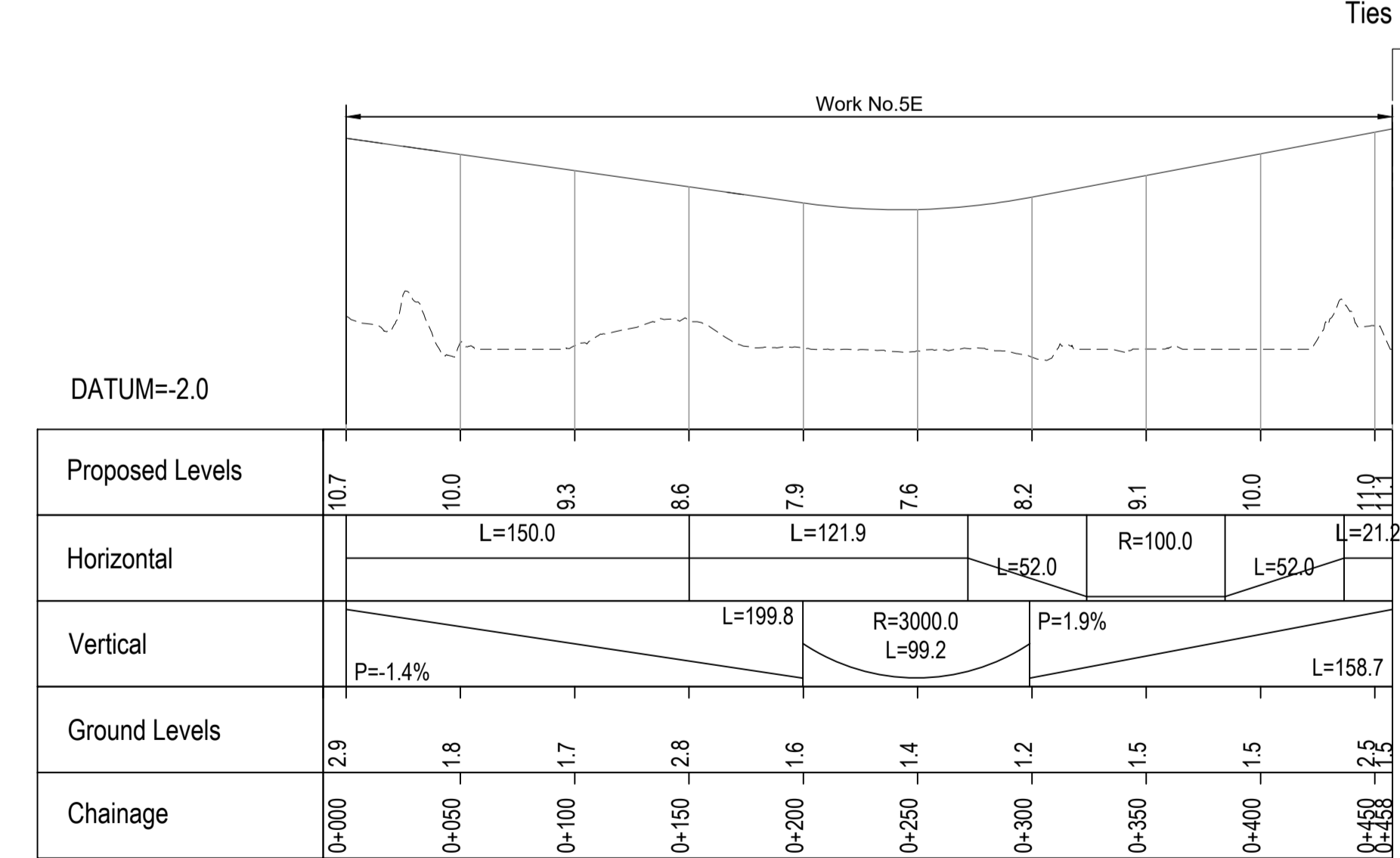
Status	DCO Examination	Original Size	A1	Revision	P02
Application Document Number	TR010032/APP/2.9	Scale	AS SHOWN		
Drawing title	TILBURY - PLAN AND PROFILES REGULATION 5(2)(o) AND 6(2) SHEET 4				
Drawing Number	HE540039-CJV-BOP-SZA_RX000000_-DR-CH-10405				



PLAN



LTC SB ON-SLIP PROFILE

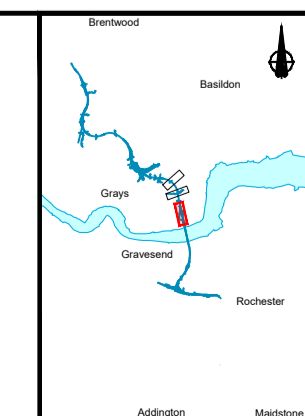
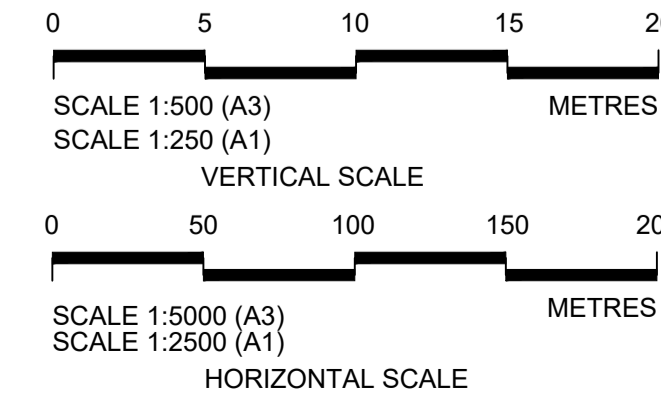


LTC SB OFF-SLIP PROFILE

Rev	Status	Rev. Date	Purpose of revision	Drawn	Check'd	Apprv'd
P01	S8	19/10/2022	DCO Application	LY	BB	ASB
P02	S8	24/08/2023	Deadline 3	LY	RO	ASB

- NOTES:
- The proposed works shown are illustrative only and will be subject to change as part of detailed design development. Any changes will be limited to being within the constraints included in the Development Consent Order (application document reference TR010032/APP/3.1).
 - These plans should be read in conjunction with Schedule 1 (Authorised Development) of the Development Consent Order (application document reference TR010032/APP/3.1).
 - Do not scale from this drawing.
 - All dimensions are in metres unless stated otherwise.
 - All levels are in metres relative to the Ordnance Datum.
 - Profile uses an exaggerated scale of 1 horizontal : 10 Vertical.

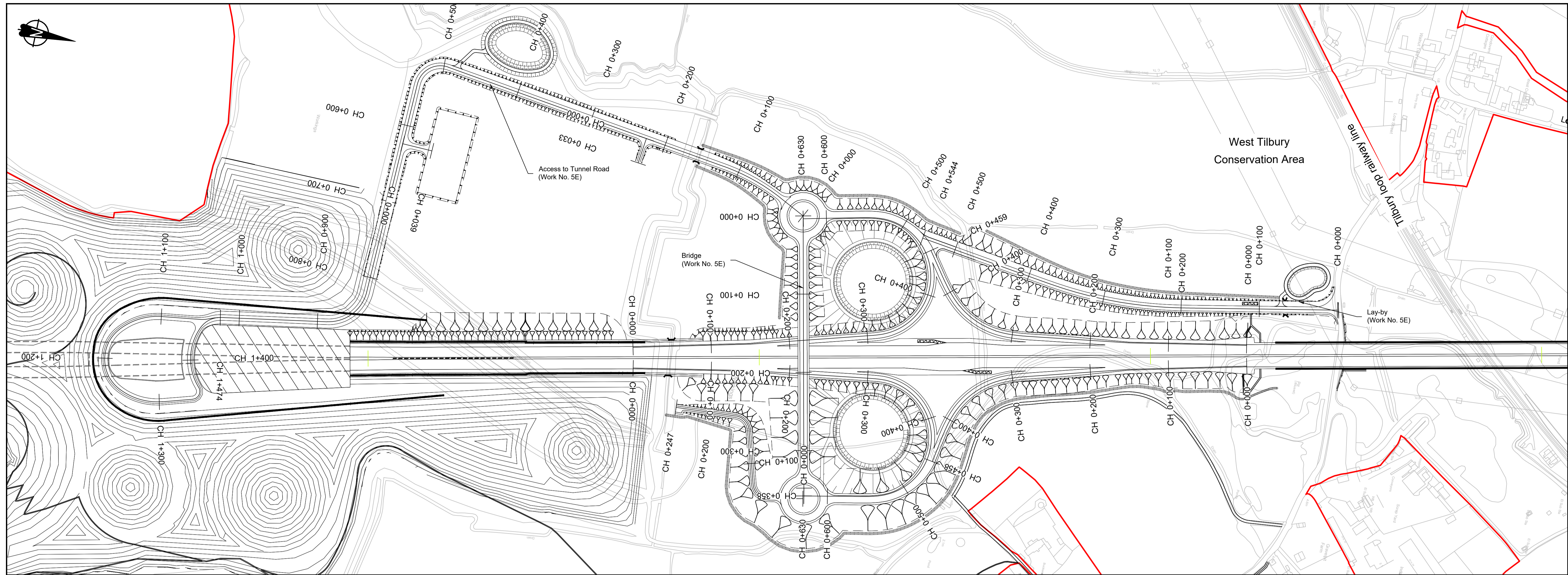
- LEGEND:
- Existing ground level
 - Structure
 - Proposed road level
 - Structures - Bridge
 - Structures - Underpass
 - NB - Northbound
 - WB - Westbound
 - EB - Eastbound
 - SB - Southbound
 - MHWS - Mean High Water Springs
 - MLWS - Mean Low Water Springs
 - FRL - Finished Road Level
 - Maintenance access
 - Order Limits



Client: national highways

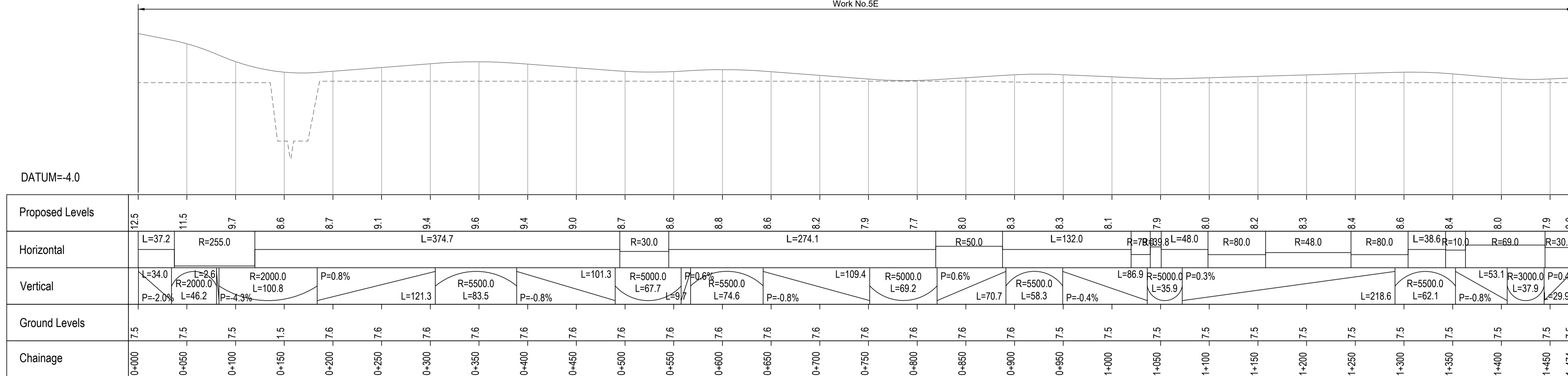
Project: LOWER THAMES CROSSING

Status	DCO Examination	Original Size	Revision
Application Document Number	TR010032/APP/2.9	A1	P02
Drawing title	TILBURY - PLAN AND PROFILES REGULATION 5(2)(o) AND 6(2) SHEET 5		
Drawing Number	HE540039-CJV-BOP-SZA_RX000000_-DR-CH-10406		



PLAN

Work No.5E

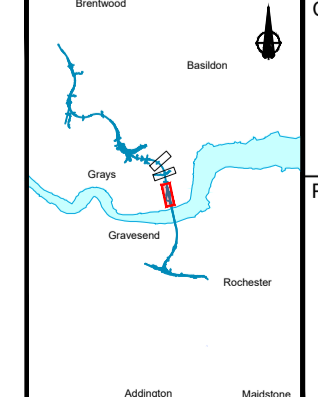
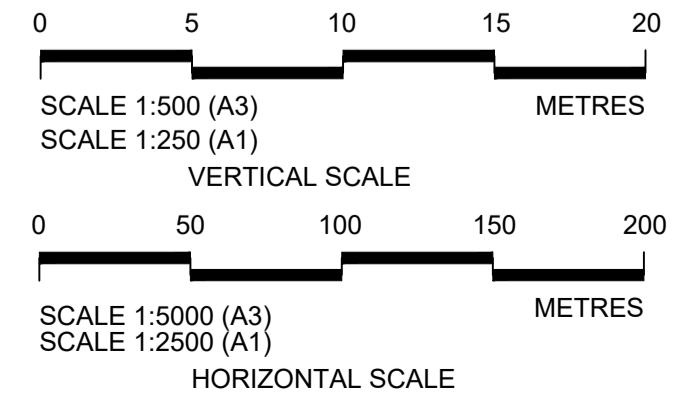


ACCESS TO TUNNEL ROAD PROFILE

Rev	Status	Rev. Date	Purpose of revision	Drawn	Chck'd	Appr'd
P01	S8	19/10/2022	DCO Application	LY	BB	ASB
P02	S8	24/08/2023	Deadline 3	LY	RO	ASB

NOTES:
 1. The proposed works shown are illustrative only and will be subject to change as part of detailed design development. Any changes will be limited to being within the constraints included in the Development Consent Order (application document reference TR010032/APP/3.1).
 2. These plans should be read in conjunction with Schedule 1 (Authorised Development) of the Development Consent Order (application document reference TR010032/APP/3.1).
 3. Do not scale from this drawing.
 4. All dimensions are in metres unless stated otherwise.
 5. All levels are in metres relative to the Ordnance Datum.
 6. Profile uses an exaggerated scale of 1 horizontal : 10 Vertical.

- LEGEND:
- Existing ground level
 - Structure
 - Proposed road level
 - Structures - Bridge
 - Structures - Underpass
 - NB - Northbound
 - WB - Westbound
 - EB - Eastbound
 - SB - Southbound
 - MHWS - Mean High Water Springs
 - MLWS - Mean Low Water Springs
 - FRL - Finished Road Level
 - Maintenance access
 - Order Limits



national highways logo
 LOWER THAMES CROSSING

Status	DCO Examination	Original Size	Revision
Application Document Number	TR010032/APP/2.9	A1	P02
Drawing title	TILBURY - PLAN AND PROFILES REGULATION 5(2)(o) AND 6(2) SHEET 6		
Drawing Number	HE540039-CJV-BOP-SZA_RX000000_-DR-CH-10407		

If you need help accessing this or any other National Highways information, please call **0300 123 5000** and we will help you.

© Crown copyright 2023.

You may re-use this information (not including logos) free of charge in any format or medium, under the terms of the Open Government Licence. To view this licence:

visit www.nationalarchives.gov.uk/doc/open-government-licence/

write to the **Information Policy Team, The National Archives, Kew, London TW9 4DU**, or email psi@nationalarchives.gsi.gov.uk.

Mapping (where present): © Crown copyright and database rights 2023 OS 100030649. You are permitted to use this data solely to enable you to respond to, or interact with, the organisation that provided you with the data. You are not permitted to copy, sub-licence, distribute or sell any of this data to third parties in any form.

If you have any enquiries about this publication email info@nationalhighways.co.uk or call **0300 123 5000***.

*Calls to 03 numbers cost no more than a national rate call to an 01 or 02 number and must count towards any inclusive minutes in the same way as 01 and 02 calls.

These rules apply to calls from any type of line including mobile, BT, other fixed line or payphone. Calls may be recorded or monitored.

Printed on paper from well-managed forests and other controlled sources when issued directly by National Highways.

Registered office Bridge House, 1 Walnut Tree Close, Guildford GU1 4LZ

National Highways Limited registered in England and Wales number 09346363